

LandDesign[®]
CREATING PLACES
THAT MATTER.

THE *Seam*

12.05.2023

Carolina Thread Trail Forum



Curtis Bridges, AICP
CRTPO



Will Washam
Town of Mooresville



Katie Lloyd, PLA, ASLA
Mecklenburg County Park + Recreation



Matt Weschler, PE, LEED AP
LandDesign



Emily Condon, PLA, ASLA
LandDesign



John Cock, AICP
Bolton + Menk

+ What is The Seam?

- 10 downtowns
- 2 counties
- SC State Line (Fort Mill) to Statesville, NC

More than
50-miles of
greenway!



+/- 200,000

residents will be within walking distance of The Seam!

...compared to +/- 140,000 residents within walking distance of the Cross Charlotte Trail (XCLT).

+/- 260,000

jobs will be within walking distance of The Seam!

...compared to +/- 130,000 jobs within walking distance of the Cross Charlotte Trail (XCLT).

POLL EVERYWHERE

*In your phone's website browser: **pollev.com***

*Username: **bpoovey681***

OR

*Text **bpoovey681** to: **22333***



POLL EVERYWHERE

Who are you?

*What **community** do you represent?*



VISION STATEMENT

*The Seam will be a transformative corridor that stitches our Carolina Thread Trail communities together with a **convenient and inviting active transportation spine** from Statesville to Pineville that provides comfortable walking and biking accessibility to people of **all ages and abilities**, builds upon and optimizes the **regional bicycle and pedestrian network**, prioritizes **equitable investments in marginalized communities**, and celebrates the region's **rich history and cultural diversity**.*

THE SEAM PROJECT GOALS



Equity



Connectivity



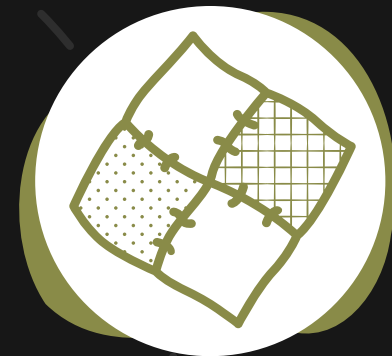
Safety



Trail
Experience



Implementation



Culture

A vertical decorative element on the left side of the slide featuring a white topographic map pattern on a dark background.

CRITERIA FOR EVALUATING THE SEAM ALIGNMENTS

■ Directness of Route

- A north-south route that decreases travel time to get from A to B (vs. a longer, meandering route)

■ Trail Character

- A route that connects interesting landmarks and distinct features

■ Speed of Implementation

- A route that follows existing trails or trails prioritized for funding
- A route that avoids challenging crossings that may require a tunnel or bridge

■ Accessibility from Home

- A route that prioritizes proximity to homes and connections to other trail networks

■ Separation from Traffic

- A route that maximizes distance between the trail and high-traffic roadways + minimizes crossing busy intersections

■ Connections to Destinations

- A route that connects to parks, schools, downtown, employers, shopping centers, + rec facilities

■ Trail Comfort

- A route that minimizes hill climbs, provides plenty of shade, and allows for wider paths

■ Access for Disadvantaged Communities

- A route that connects to areas that spend more money + time on transportation, have lower rates of car ownership, higher rates of poverty, less access to local jobs, and greater health disparities, among other metrics



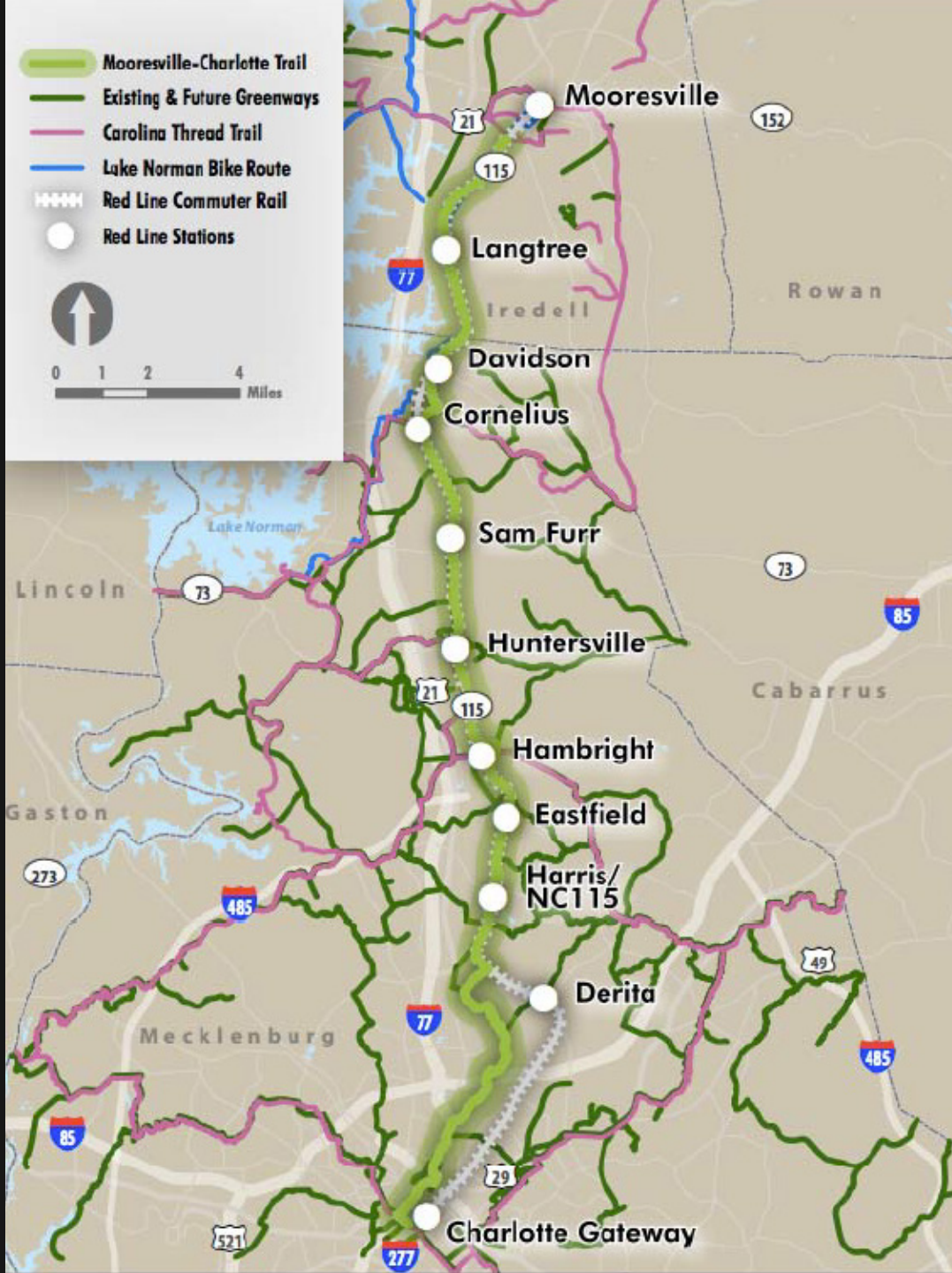
POLL EVERYWHERE

*What is the **most important characteristic** for The Seam to have?*

(directness of route, trail character, speed of implementation, accessibility from home, access for disadvantaged communities, separation from traffic, connections to destinations, trail comfort, other?)

HISTORY OF THE SEAM

- 2010 – North Corridor Trail
- 2013 – Mooresville to Charlotte Trail (MCT)
- 30-miles of trail (Charlotte Gateway Station to Downtown Mooresville)
- Envisioned as a standalone project that can occur with or without future Red Line commuter rail, but considers stations in its alignment



+ Rebrand

April 2021

“

The Seam is a smart, concise, + pithy name that conveys a trail of core importance to the system. It also pays homage to our area's rich textile heritage + celebrates the chain of mill towns it connects or 'stitches' together.”

Mecklenburg County Trail Logos
The Seam Options | Recap

3/18 - VOTING RESULTS:



A vertical decorative element on the left side of the page featuring a white topographic map pattern on a dark background.

+ Rebrand

April 2021

Other names that were considered...

The Spine

This name works hard on several levels: The verticality of the word “spine” makes the north-south direction clear. “Line” associates the name to current light-rail references (e.g., Blue Line and Silver Line) while “spine” keeps this name from being confused with them. “Spine” also suggests connecting links and even lends itself to the central geographic nature of this watershed route. And finally, the rhyme in the name makes it friendly and highly adoptable.

The Catawba Passage

Historically, the Native Americans who came to be called “Catawba” occupied the Catawba River Valley. They are descended from a large group of independent indigenous peoples who spoke the Siouan language.

A “passage” is a way, path or corridor, but also connotes the passing of time or a period of travel. Or it describes a short section of a book, poem or song.

Centerline Trail

This name also connects to light-rail names, actually putting the trail into the mix of commuter options. The strength of this name lies in pointing to the central nature of the trail as it connects towns and cities and makes it easy to get from one to the next. It conveys that this is not an off-the-beaten-path trail but quite the opposite. We can imagine messaging such as “Take the Centerline.”

The Carolina Highline

Because the trail skitters north to south along the top of a crest or ridge divide, “The Highline” is a defining, ownable and memorable moniker that also feels light, airy and above it all. Taking the “high road” for a little fun and freedom along our area’s newest wanderway. The “-lina” and “-line” of the name also provide some poetic lyricism and balance.

The Sugaree Trace

The Sugaree were a small tribe of Siouan-speaking Native Americans who lived throughout the Catawba River Valley from North to South Carolina. They occupied a fertile district and many towns and settlements. They later merged into the Catawba.

A “trace” is a bygone term defining a trail or path left by the passage of animals, people or vehicles over land.

Together, the words give the name some historical heft, authenticity and pride.

The Seam

“The Seam” is a smart, concise and pithy name that conveys this is a trail of central or core importance to the system. It also pays homage to our area’s rich textile heritage and celebrates the chain of mill towns it connects or “stitches” together — even dovetailing nicely with “The Carolina Thread Trail.”

We also like that “The Seam” says “trail” without actually having to say it. But, of course, “The Seam Trail” could be just as memorable and crisp.

Source: Wray Ward, LLC

+ Rebrand

April 2021

Mecklenburg County Trail Logos

The Seam FINAL / Color Variations

primary



pms 7622

secondary



pms cool gray 9



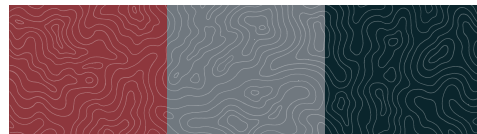
pms black 6



pms 7536



texture pattern



primary



pms 174

secondary



pms 404



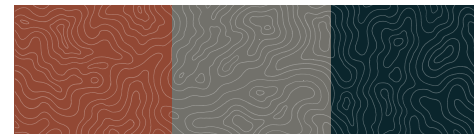
pms black 6



pms 7536



texture pattern



primary



pms 718

secondary



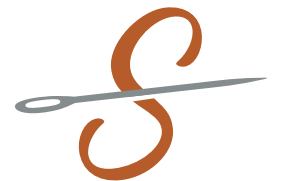
pms 7536



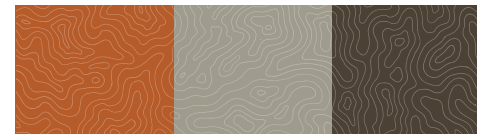
pms 426



pms 7533



texture pattern



+ Ongoing Planning Study (2023/2024)

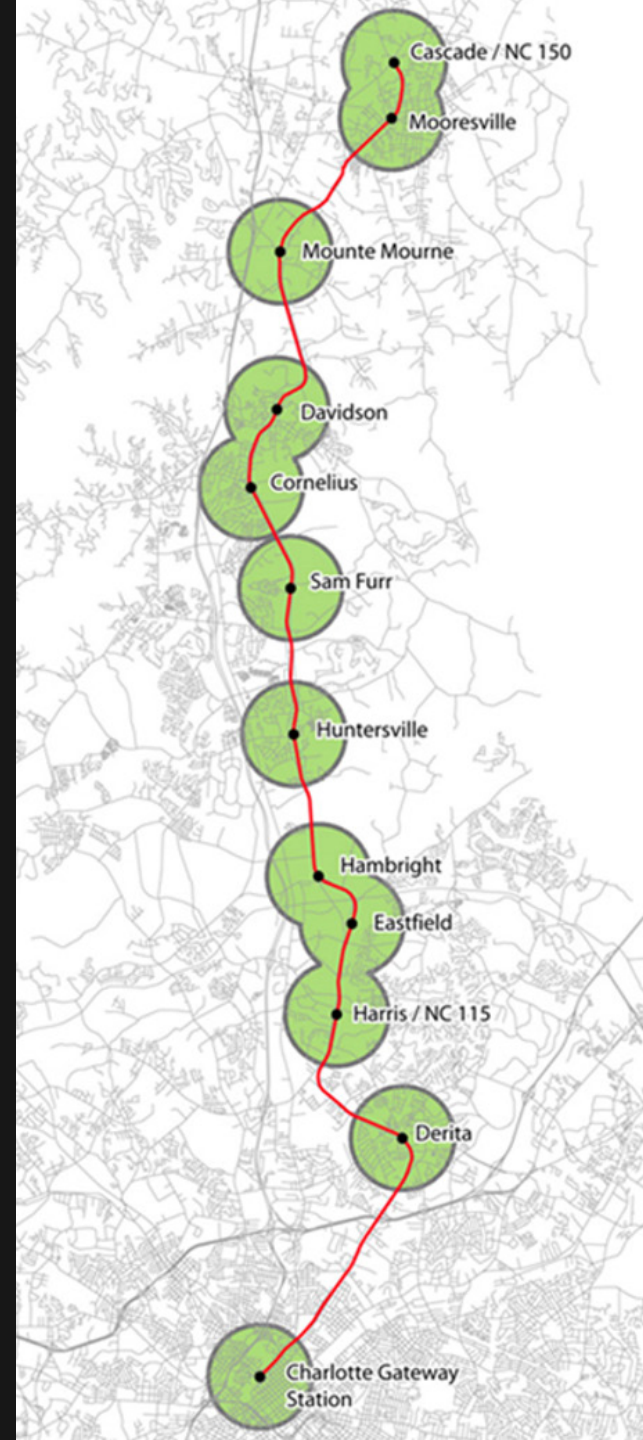
- Extend alignment from Mooresville to Statesville
- Revisit proposed alignments in light of new development, ongoing roadway projects, and individual planning studies
- Coordinate with CATS Red Line Study
- Build momentum towards implementation



+ LYNX Red Line Study

- The LYNX Red Line is a 25-mile commuter rail project that serves Charlotte to Mooresville, and could eventually expand into Iredell County to serve Lowe's HQ and downtown Mooresville
- The rail will share tracks with freight operations on the Norfolk Southern rail line
- In 2022, the MTC approved \$5M to advance the 2009 Red Line Study. The study kicked off in November 2023 (behind The Seam study by a few months)
- The study will evaluate new alignment options, evaluate different operating plans, and update station locations, track design, and the cost estimate from the original study
- Norfolk Southern line is within a 100' charter easement – Discussions with Norfolk Southern are ongoing, outcomes may impact some of the alignment options for The Seam

Source: CATS



+ Regional Connections



+ Regional Connections

- The Seam overlaps with the Iredell County + Mecklenburg County CTT alignment
- Makes connections to more than 8 regional greenway systems
 - XCLT (Little Sugar Creek Greenway)
 - XCLT2
 - Future Big Sugar Creek Greenway
 - Irwin/Stewart Creek Greenway
 - Mallard/Clarks Creek Greenway
 - Long Creek Greenway
 - Silver Line Rail Trail
 - Blue Line Rail Trail
 - + more!

CHARLOTTE REGIONAL bikeways map

This map is intended to illustrate major bikeways in the Charlotte region which are suitable for all ages and abilities. For a map of all Charlotte bicycle facilities and routes, please see the Charlotte Cycling Guide at:

<https://charlottenc.gov/Transportation/Programs/Pages/Bicycle.aspx>

- Indicates Existing Segment
- ||||| Indicates Planned/Funded/Future Segment
- Major Roadway
- Waterbody

MAJOR REGIONAL BIKEWAYS

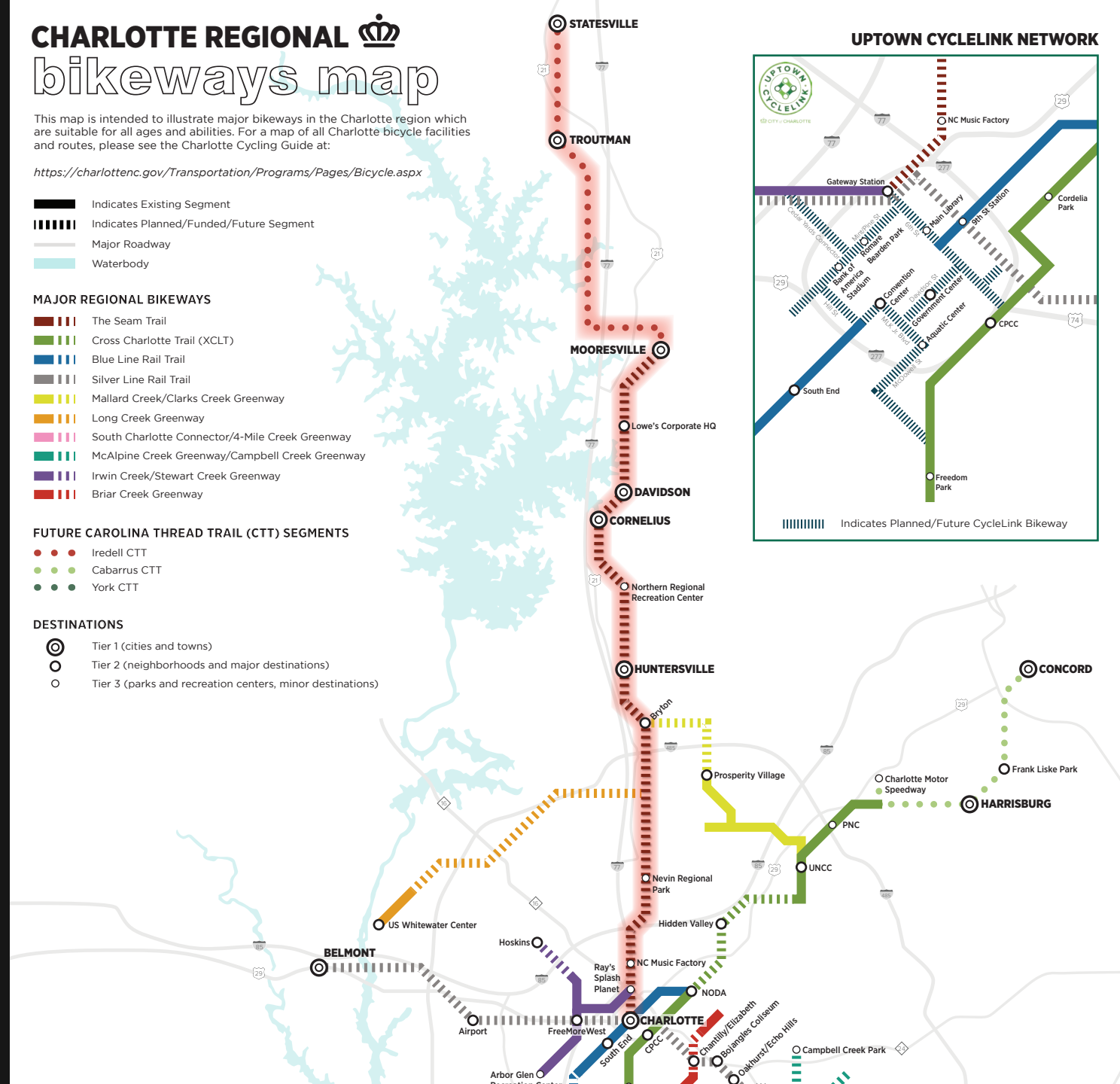
- ||||| The Seam Trail
- ||||| Cross Charlotte Trail (XCLT)
- ||||| Blue Line Rail Trail
- ||||| Silver Line Rail Trail
- ||||| Mallard Creek/Clarks Creek Greenway
- ||||| Long Creek Greenway
- ||||| South Charlotte Connector/4-Mile Creek Greenway
- ||||| McAlpine Creek Greenway/Campbell Creek Greenway
- ||||| Irwin Creek/Stewart Creek Greenway
- ||||| Briar Creek Greenway

FUTURE CAROLINA THREAD TRAIL (CTT) SEGMENTS

- Iredell CTT
- Cabarrus CTT
- York CTT

DESTINATIONS

- ⊙ Tier 1 (cities and towns)
- Tier 2 (neighborhoods and major destinations)
- Tier 3 (parks and recreation centers, minor destinations)

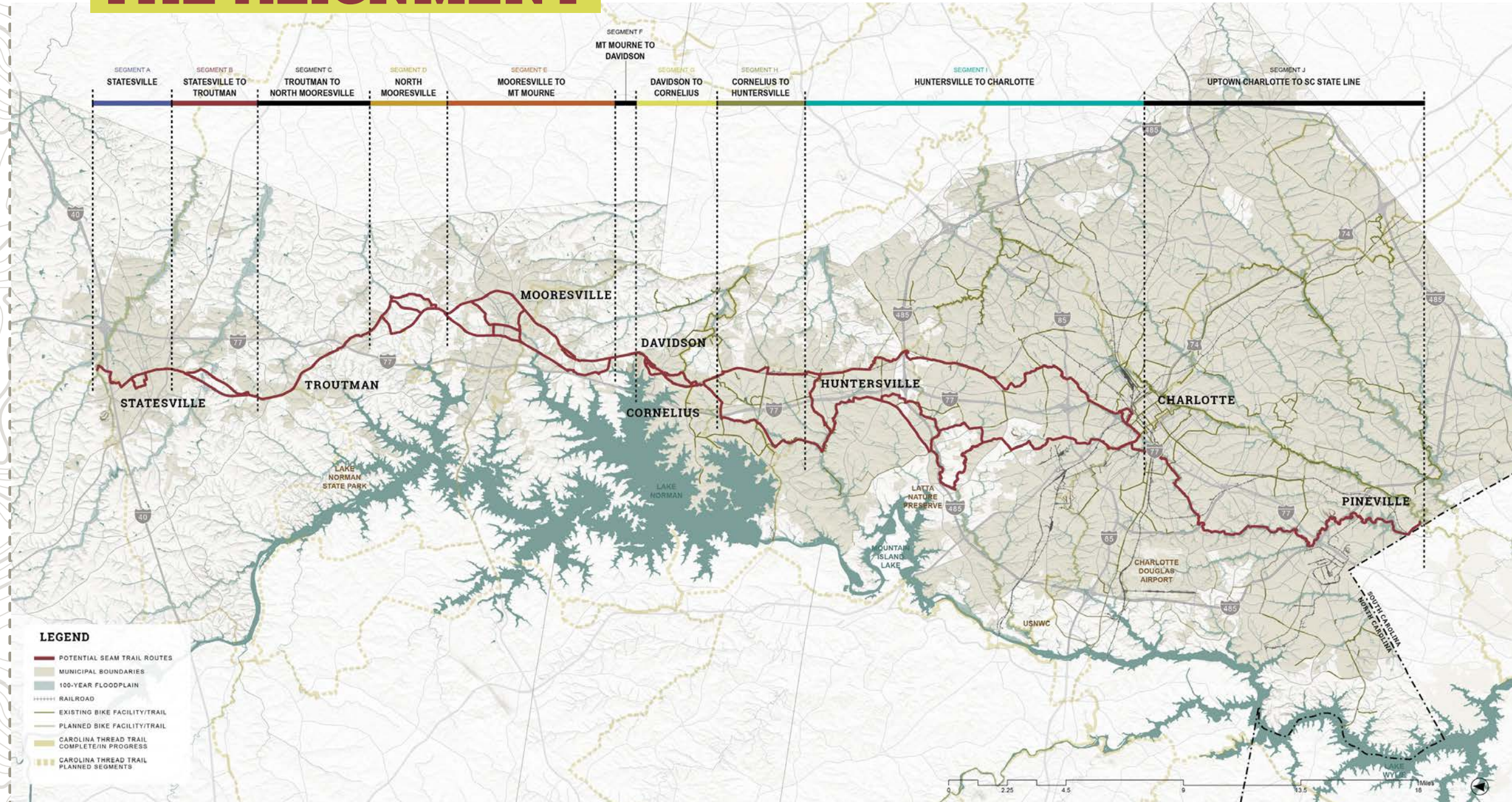




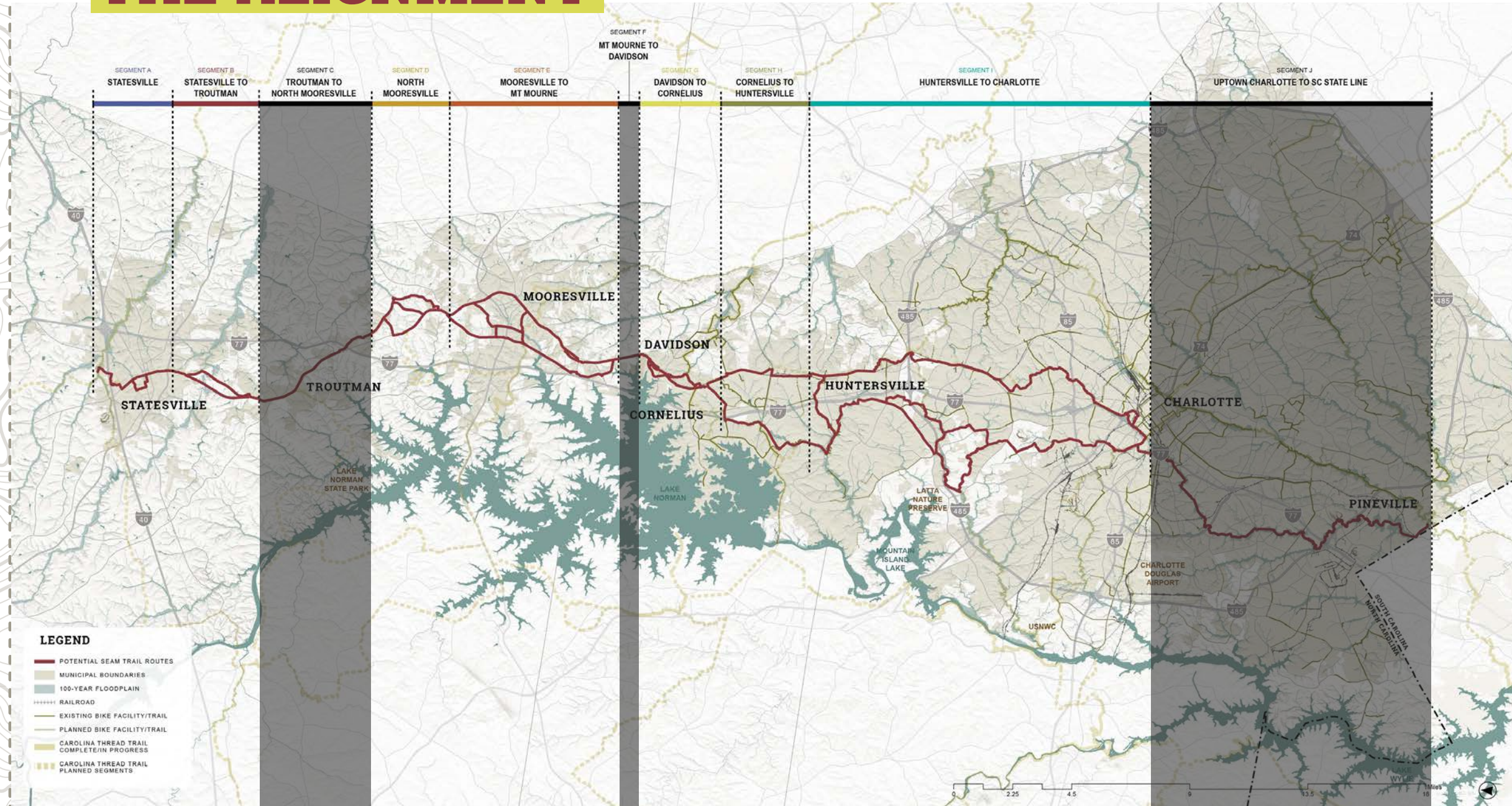
POLL EVERYWHERE

*What are you **most excited about** when envisioning
a **50-mile+ trail through the region?***

THE ALIGNMENT



THE ALIGNMENT



THE ALIGNMENT

10
segments

7
with
alignment
alternatives

- A STATESVILLE**
- B STATESVILLE TO TROUTMAN**
- C TROUTMAN TO NORTH MOORESVILLE**
- D NORTH MOORESVILLE**
- E MOORESVILLE TO MT MOURNE**
- F MT MOURNE TO DAVIDSON**
- G DAVIDSON TO CORNELIUS**
- H CORNELIUS TO HUNTERSVILLE**
- I HUNTERSVILLE TO CHARLOTTE**
- J CHARLOTTE TO SC STATE LINE**

STATESVILLE

TROUTMAN

MOORESVILLE

MT MOURNE

DAVIDSON

CORNELIUS

HUNTERSVILLE

CHARLOTTE

PINEVILLE

SC STATE LINE

TOUR OF THE *Seam*



A perfect weekend?



A perfect weekday?



+ What is a perfect weekend on The Seam?

ITINERARY

SATURDAY

- Wake up in Fort Mill, South Carolina
- Breakfast in Pineville
- Lunch in Charlotte
- Afternoon Beer in Huntersville
- Afternoon Snack in Cornelius
- Dinner + Sleep in Davidson

SUNDAY

- Wake up in Davidson
- Lunch in Mooresville
- Afternoon Snack in Troutman
- Sunset at Kestler's Bridge
- Dinner + Sleep in Statesville

+ Saturday morning, 8:30am



PINEVILLE



ODOMETER

04.71 MI

- Fort Mill to Pineville via Big Sugar Creek Greenway
- Breakfast in Pineville

CHARLOTTE



- Renaissance Park
- Charlotte Regional Farmer's Market
- Clanton Park
- Bryant Park



+ Saturday morning, 11:30am

UPTOWN CHARLOTTE



ODOMETER

16.18 MI

- Pineville to Charlotte via Big Sugar Creek + Irwin Creek Greenways
- Lunch at Community Matters Cafe



CHARLOTTE

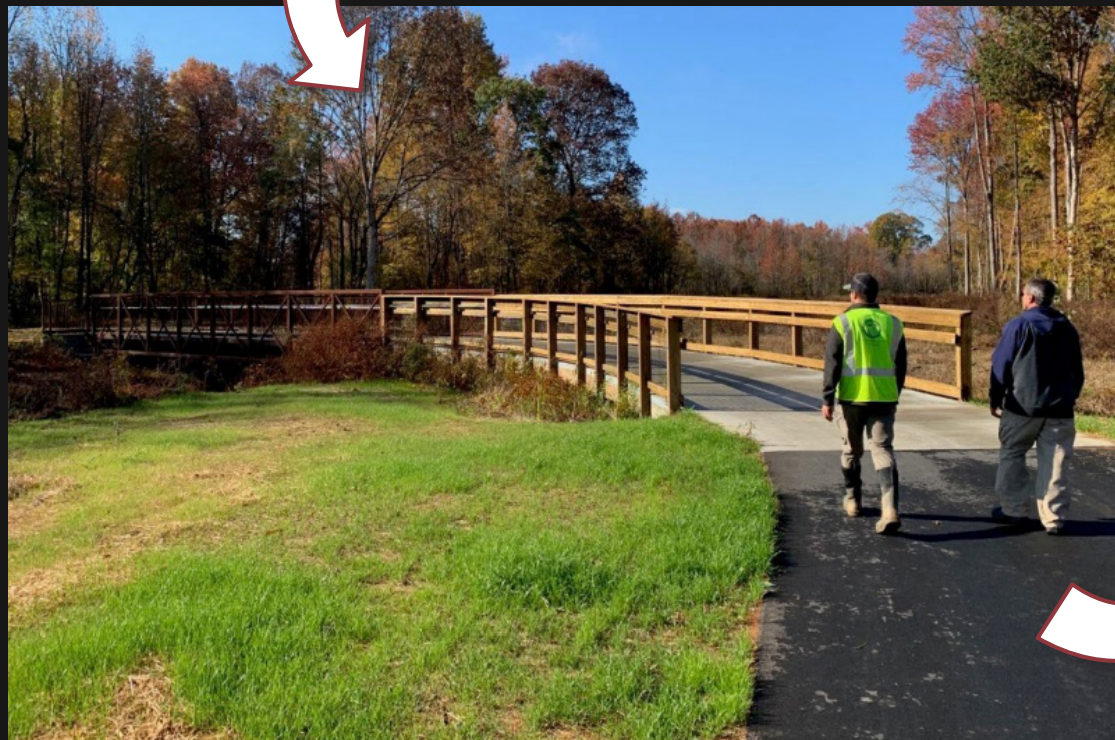


east side



- Frazier Park + Irwin/Stewart Creek Greenway
- Camp North End
- Nevin Park

west side



- Hornets Nest Park
- Long Creek Greenway
- Northlake Mall

CHARLOTTE



+ Saturday afternoon, 2:15pm



HUNTERSVILLE



ODOMETER

30.38 MI

- Afternoon Beer at Crafty Beer Guys in Downtown Huntersville

HUNTERSVILLE



east side

- North Meck Park Pump Track
- Northern Regional Rec Center
- Bailey Road Park

west side



HUNTERSVILLE



- Hugh Torance House + Store
- Birkdale Village
- Caldwell Station + McDowell Creek Greenways



+ Saturday afternoon, 3:45pm

CORNELIUS



ODOMETER

35.01 MI

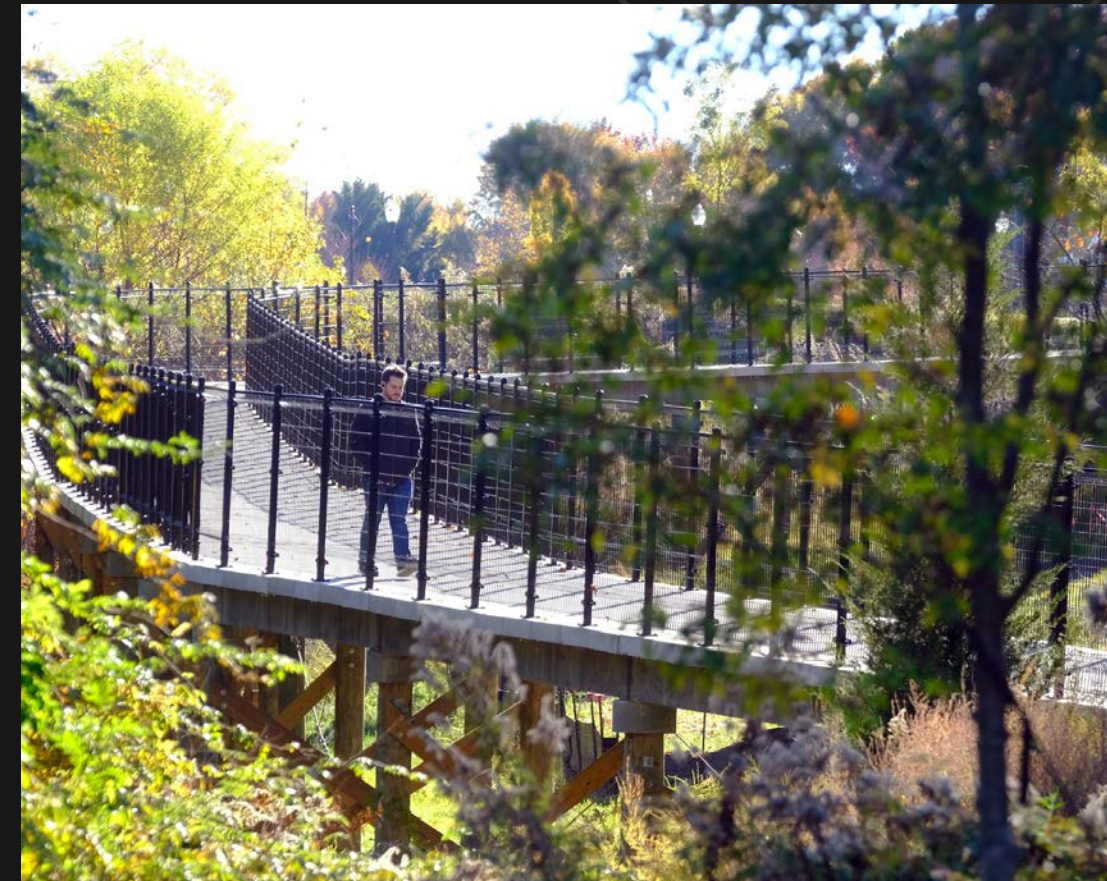
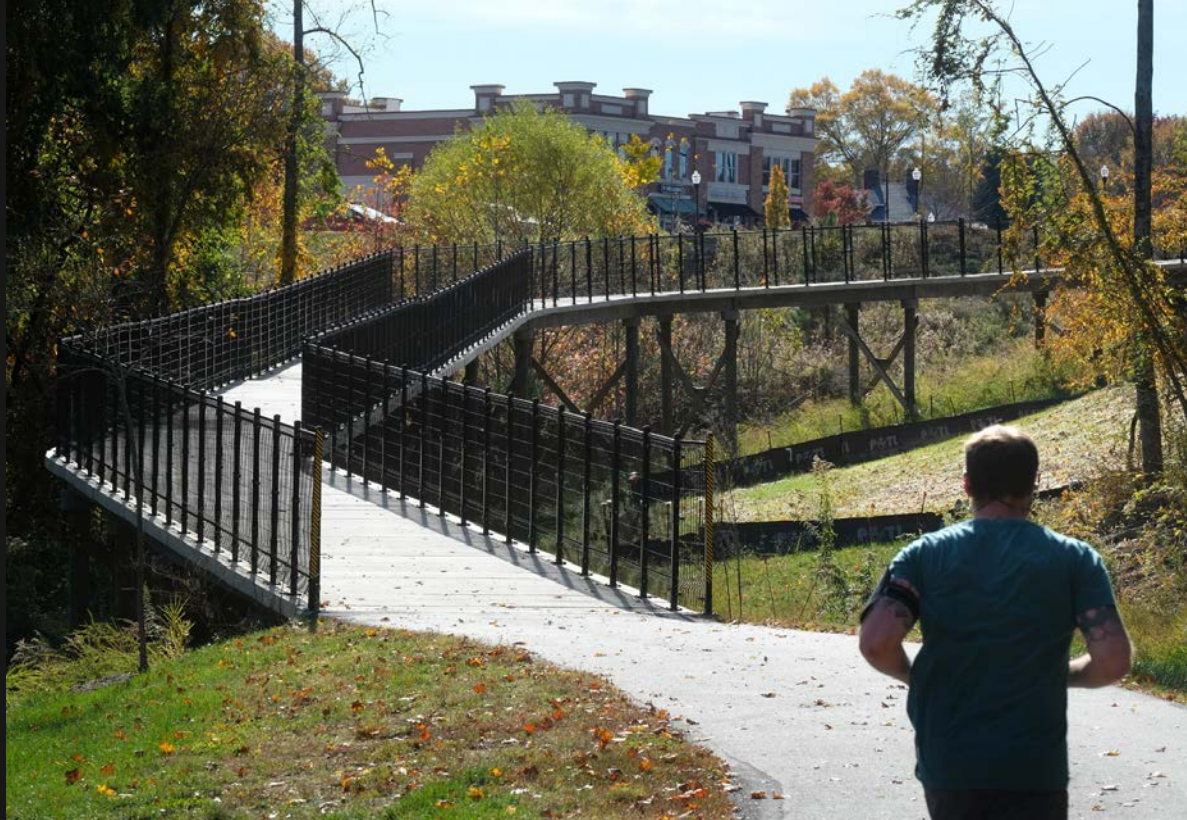
- Afternoon snack at Antiquity Town Center
- Optional detour to Downtown Cornelius



CORNELIUS



■ Antiquity Greenway to Davidson



+ Saturday evening, 5:30pm

DAVIDSON



FINAL MILEAGE
COUNT FOR DAY 1

36.99 MI

- Stay Downtown at the Davidson Village Inn
- Dinner at Kindred



+ Sunday morning, 9:30am

DAVIDSON 



ODOMETER

37 00 MI

DAY 2

00.00 MI

- Breakfast at Summit Coffee
- Visit your old professor at Davidson College





MOORESVILLE



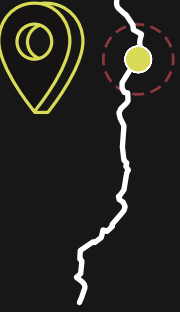
- Beaty Park
- Lake Norman
- Merino Mill



+ Sunday midday, 11:30am



MOORESVILLE



ODOMETER

44.06 MI

DAY 2

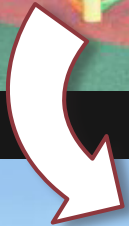
07.06 MI

- Davidson to Downtown Mooresville via NC-115
- Lunch at Dulcet + Delish Café

TROUTMAN



- Selma Burke Recreation Center
- Lake Norman Humane Society
- Noble Acres Equestrian Facility



+ Sunday afternoon, 3:30pm



TROUTMAN



ODOMETER

5996 MI

DAY 2

22.96 MI

- Mooresville to Troutman
- Afternoon snack at Southern Treats/ Full Belly Deli
- OR pop over to the Iredell County Fairgrounds

+ Sunday afternoon, 3:30pm

TROUTMAN



ODOMETER

5996 MI

DAY 2

22.96 MI

- Mooresville to Troutman
- Afternoon snack at Southern Treats/ Full Belly Deli
- OR pop over to the Iredell County Fairgrounds



+ Sunday evening, 5:45pm

TROUTMAN



ODOMETER

6480 MI

DAY 2

27.80 MI

- Golden hour on the Kestler Bridge

<https://www.youtube.com/watch?app=desktop&v=EGWFwv0jyAU>

+ Sunday evening, 7:00pm

STATESVILLE



- Stay Downtown at the Inn on Front Street
- Dinner at Twisted Oak Tavern



+ Weekend Recap

DAY 1

37.00 MI

DAY 2

30.56 MI

FINAL MILEAGE COUNT

67.56 MI

- 2 days, 10 'downtowns'
- Countless local businesses, parks, historical features, greenway connections, + natural assets to explore

ITINERARY

SATURDAY

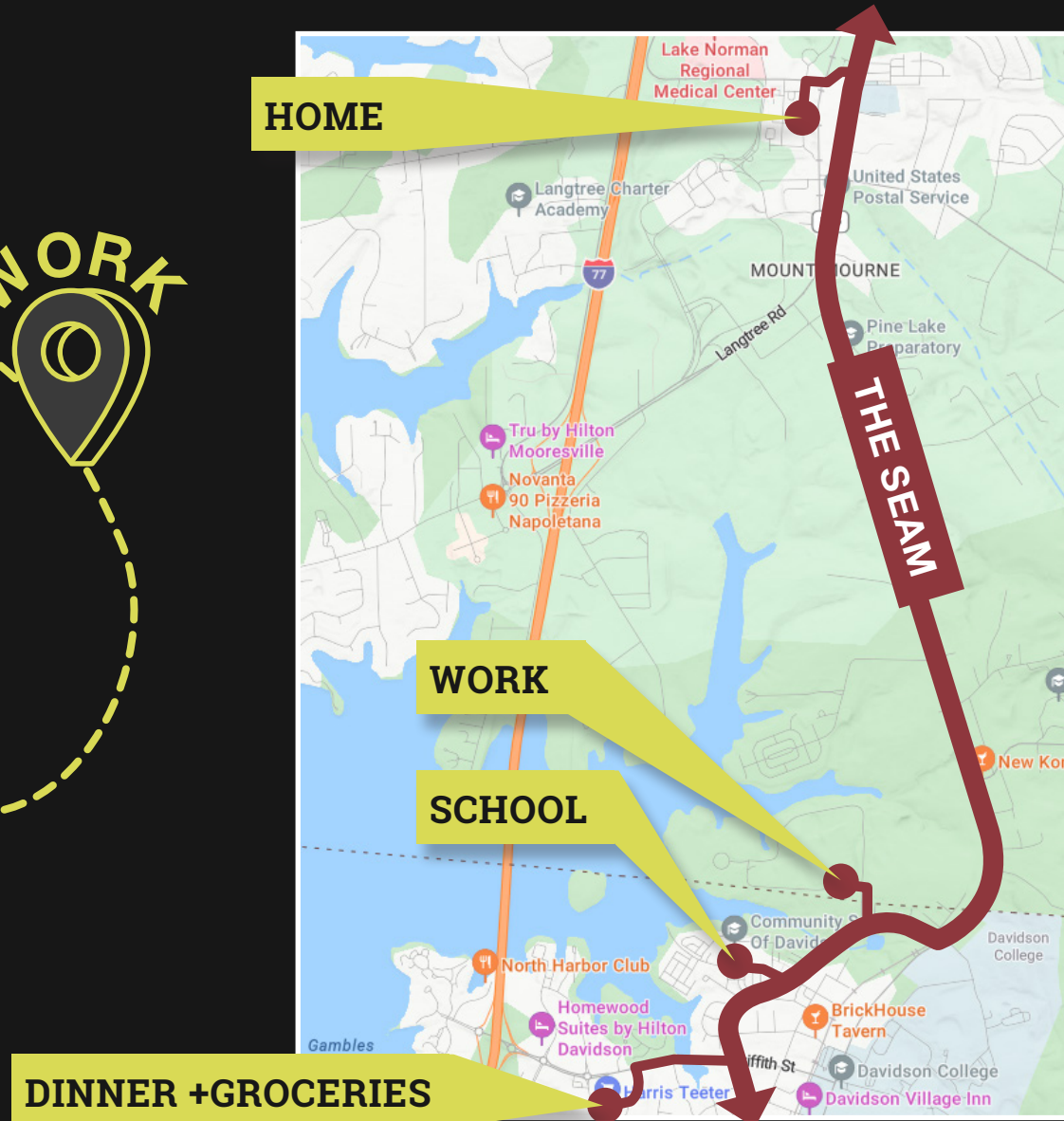
- Wake up in Fort Mill, South Carolina
- Breakfast in Pineville
- Lunch in Charlotte
- Afternoon Beer in Huntersville
- Afternoon Snack in Cornelius
- Dinner + Sleep in Davidson

SUNDAY

- Wake up in Davidson
- Lunch in Mooresville
- Afternoon Snack in Troutman
- Sunset at Kestler's Bridge
- Dinner + Sleep in Statesville



+ What about a perfect weekday on The Seam?



- A parent and teenager (the Walkers) live in the Mooresville/ Mt Mourne area at **Legacy Lake Norman Apartments**
- They bike 4 miles in the morning to drop the teen off at the **Community School of Davidson**
- The parent then bikes to work at **Ingersoll Rand Corporate Offices**
- They meet up in the evening for dinner at **Davidson Commons**
- After dinner they stop for groceries at **Harris Teeter**, and then have an easy 25-min bike ride home (4.6 miles)

A vertical decorative element on the left side of the slide, featuring a white topographic map pattern on a dark background.

POLL EVERYWHERE

*Now that you've experienced a tour of The Seam,
what are you **most excited about** when envisioning
a 50-mile+ trail through the region?*

***How far** would you walk/run/ride on The Seam?*

+ Help us plan The Seam!



Take the online survey (TBD)



Provide your comments on the online web map (TBD)



Attend public engagement events (TBD)

Visit seamtrailnc.com for future project updates, interactive maps, + more!

THE *Seam*
Q+A