



# TAPESTRIES TO TRAILS

## **SOUTH FORK CORRIDOR PARTNERSHIP**

CTT Trail Forum 12.2.21

A vertical line on the left side of the slide, with decorative geometric shapes (triangles and diamonds) in blue and brown at the top and bottom. The shapes are arranged in a way that they appear to be part of a larger pattern.

# AGENDA & OBJECTIVES

## Agenda

- Introduction of the South Fork Corridor
- Panel discussion
- Q & A

## Objectives

- Creating a vision guided by community leadership
- Formation of partnerships and collaboration
- Holistic multidimensional partner buy in and investment
- Catalyzing change by embracing trails

**\*Create your corridor back home**

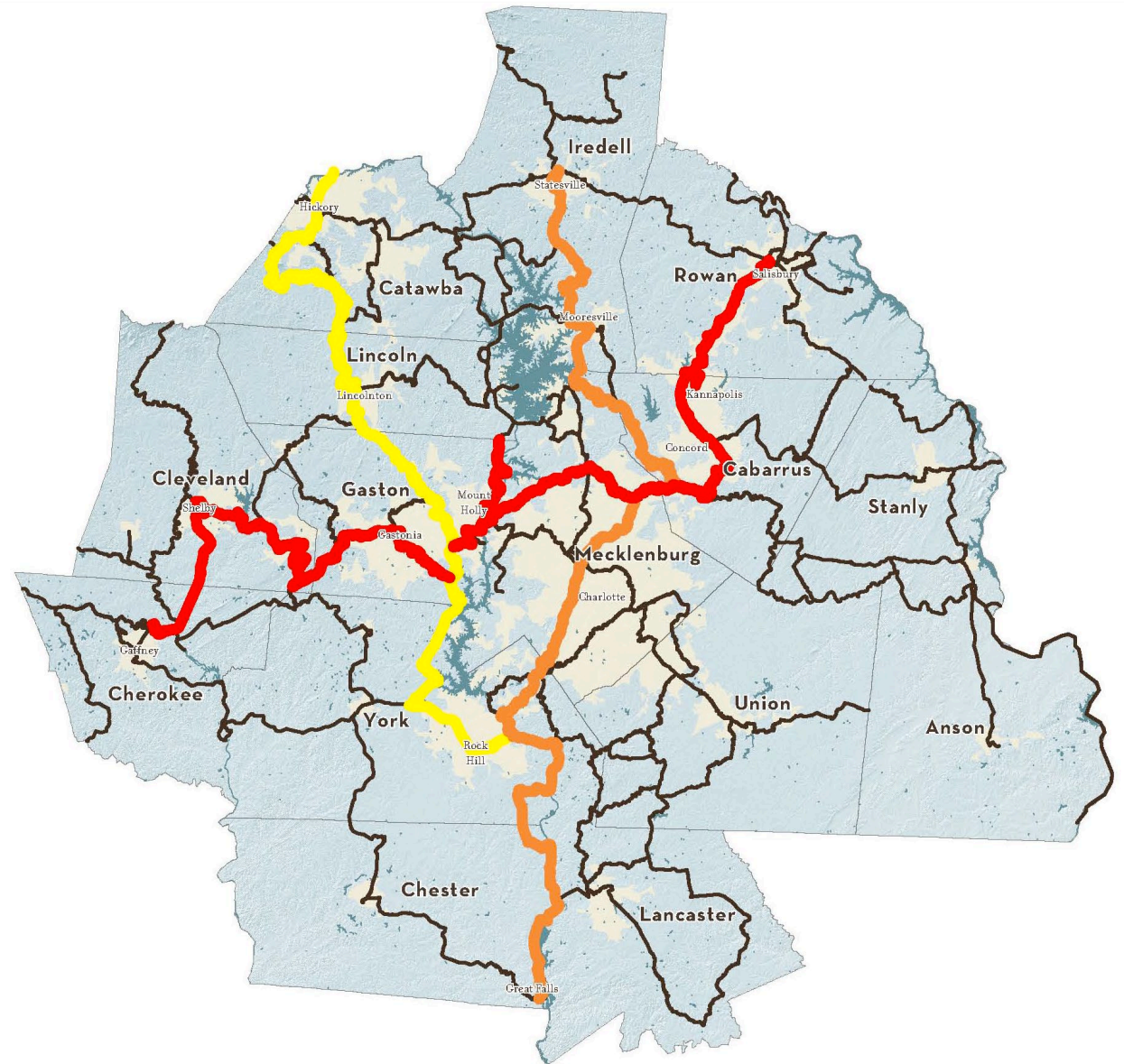
# CORRIDORS



**CAROLINA  
THREAD TRAIL**

## Strategic Regional Corridors

-  Primary East - West Corridor  
Salisbury to Shelby  
174.7 Miles
-  North - South Spine  
Statesville to Great Falls  
138.1 Miles
-  Western Spine  
Hickory to Rock Hill  
117.9 Miles
-  Carolina Thread Trail







# GASTON COUNTY





GASTON COUNTY





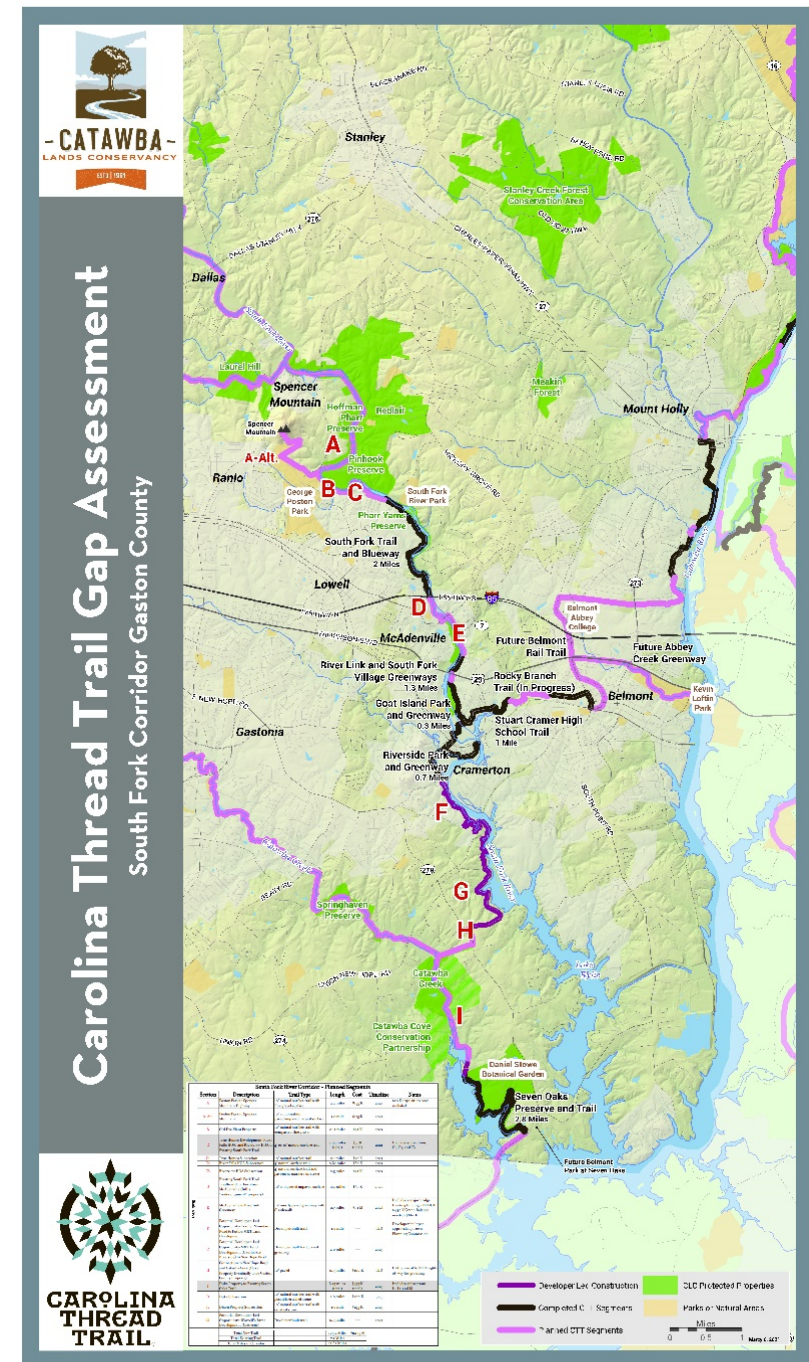


# STRATEGIES TO CLOSE THE GAPS

## 7 EXISTING, 12 NEW

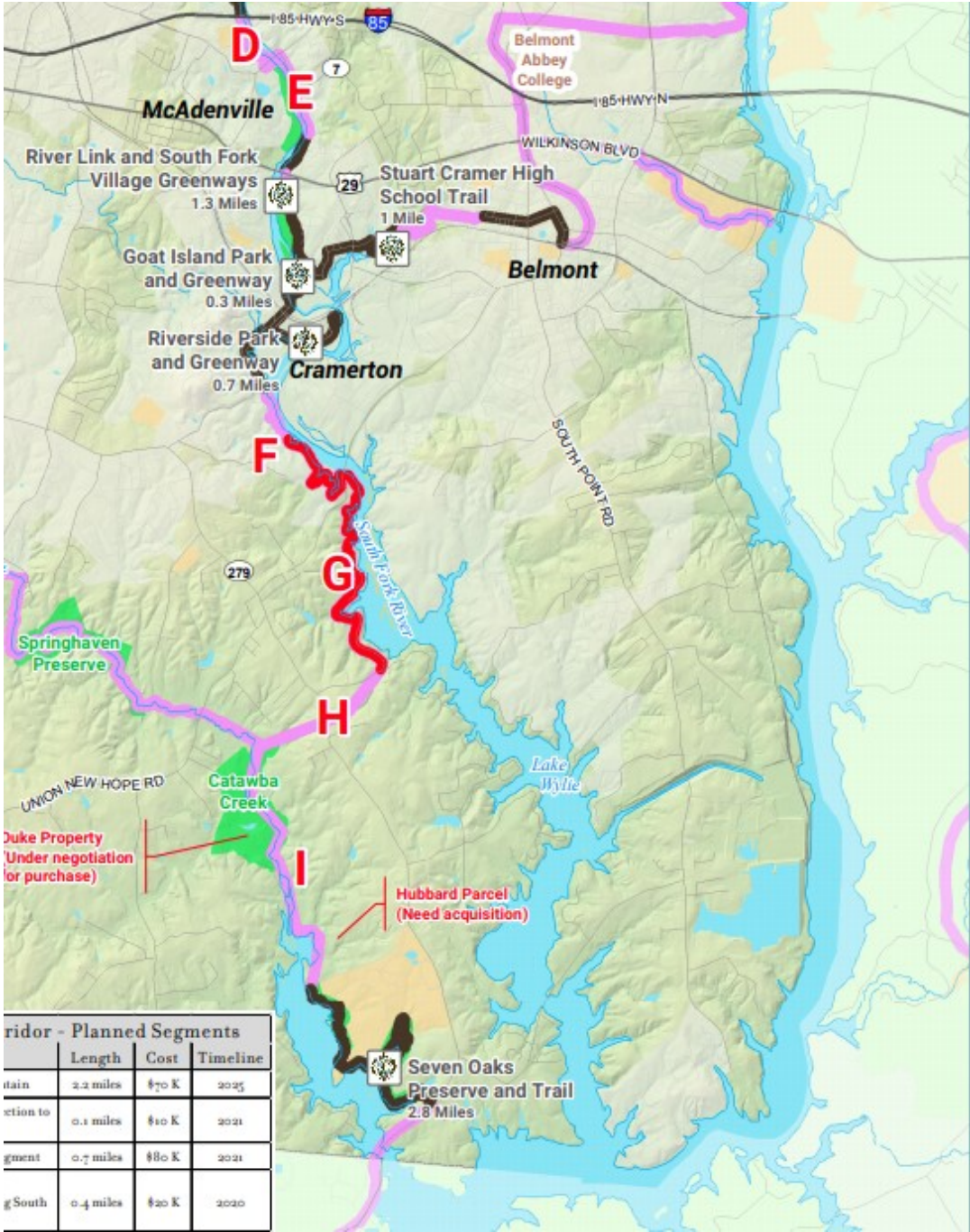
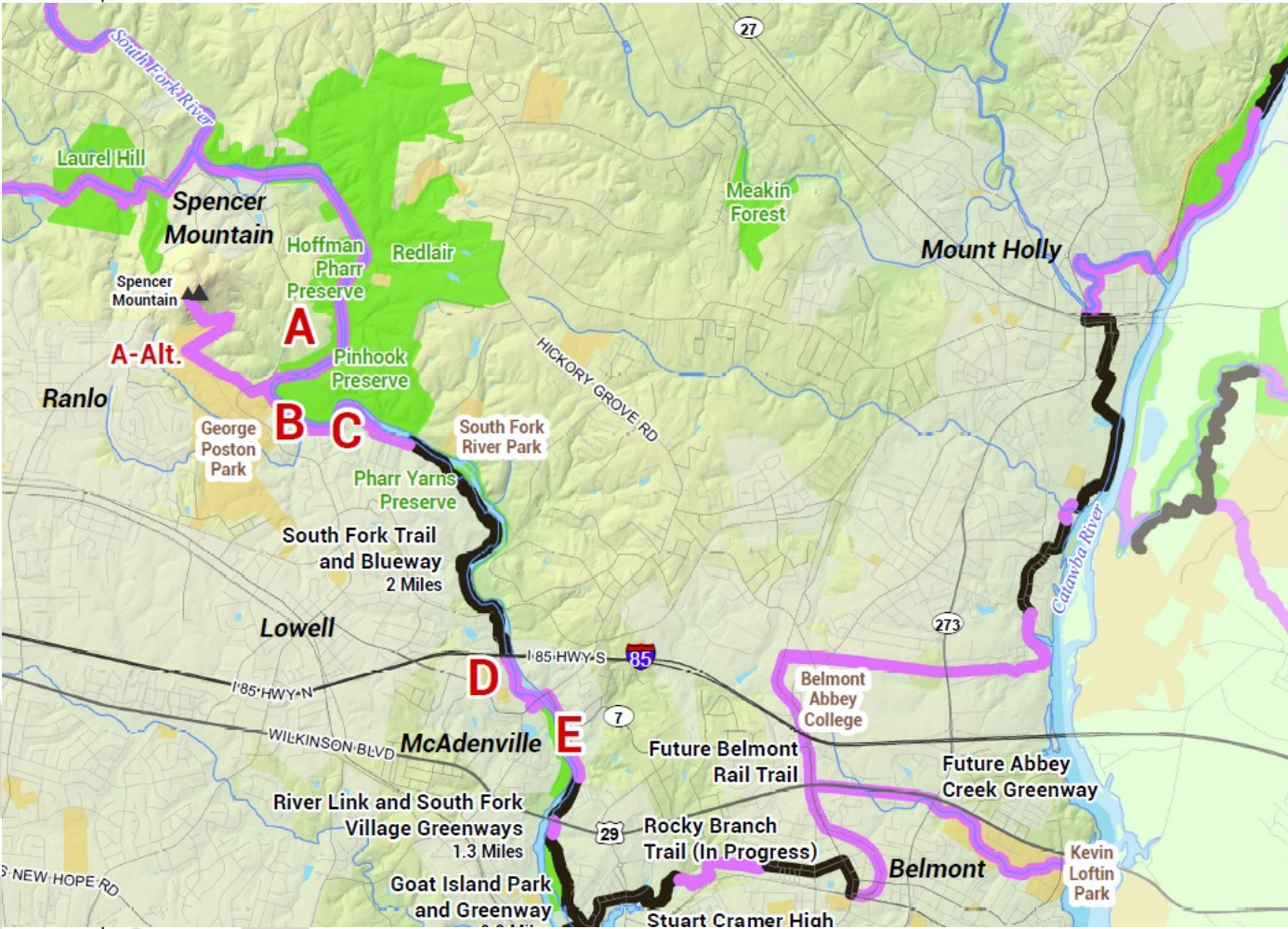
- Spencer Mountain
- Poston Park
- True Homes
- River Falls
- River View
- Villages at Cramer Mountain
- M&T Land – Overlook at Riverside
- Duke Energy – Catawba Cove
- Crescent – Worrell's River

*Full time Gaston County Community Coordinator*





# SOUTH FORK CORRIDOR





# SOUTH FORK CORRIDOR - JEWEL IN THE CROWN

- Rapidly increasing usage
  - South Fork Trail 42,000/year
  - Riverlink Trail 72,000/year
  - Crowders Mountain 800,000/year
- Attractions
  - Outdoor art, 3-4 locations
  - Linking downtowns of Belmont, McAdenville, Cramerton, Lowell
  - 5-6 overlooks, e.g. Spencer Mtn
  - Multiple parks



South Fork Trail



# ART & OVERLOOKS

**fiberess**

**5550 77 Center Drive**



Brooklake Overlook

Copyright: Barbara Petersen



hikethehudsonvalley.com



# ROCKY BRANCH PARK



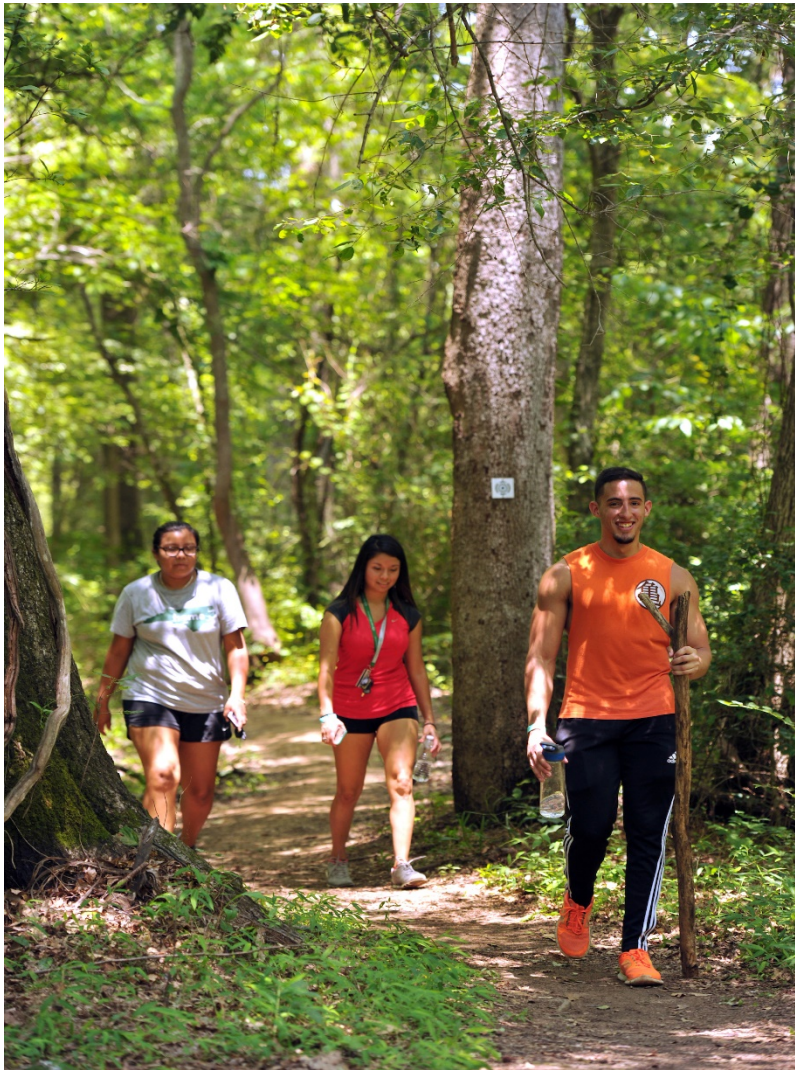


# FEATURES & TRAIL SURFACING





EXISTING TRAILS





# IMPACT

- Increased visitors & tourism
- Community revitalization
- Increased property values
- Increased usage & support of parks/recreation





# NORTHWEST ARKANSAS





# A VISION & STRONG PARTNERSHIPS!



**CATAWBA**  
**RIVERKEEPER®**

