

TRAIL FORUM 2019

*Advancing the
Carolina Thread Trail*

CREATING HISTORICALLY THEMED TRAILS THROUGH UNIQUE COLLABORATION

Jeff Ashbaugh, PLA, Senior Project Manager, Alfred Benesch & Company

Jon Wood, PLA, Senior Park Planner, Alfred Benesch & Company

Ben Richardson, Chief of Planning and Partnerships for the Southern Campaign of the American Revolution Parks Group,
National Park Service

Paul LaFrancios, Ph.D., Professor of Economic and Chair of Professional Studies, Limestone College

Creating Historically Themed Trails Through Unique Collaboration

12TH ANNUAL TRAIL FORUM



Collaboration

Generations/Eras: Then & Now – History Benefits

- Enhancing Cultural Awareness / Identity
- Creating Value / Generating Economic Activity
- Improving Health through Recreation / Active Living

Partnerships

- Planning & Design
- Funding
- Implementation
- Trail Routing/Corridors
- Historical Interpretation



Collaboration

Looking into the Future while Remembering the Past:

- Cherokee Co CTT MP (Sept 2012)
- OVNHT Master Plans (2018)
- Rowan County Communities CTT MP (Oct 2014)
- NCASLA Design Charette (April 2014)
- Yadkin River Trail Plan
- High Point Regional Bike Plan



Background

Overmountain Victory National Historic Trail

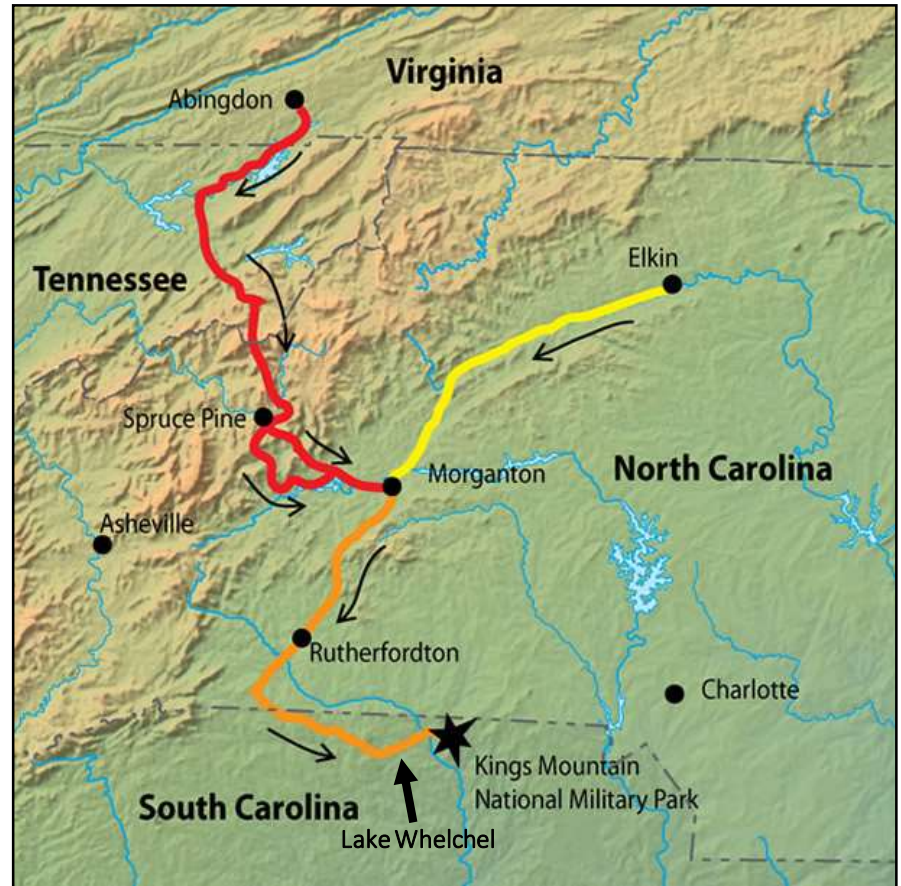
- Commemorates campaign of 2,000 horse-mounted patriot militia men (some from “over-the mountains”) to Battle of Kings Mountain in 1780



Background

Overmountain Victory National Historic Trail

- Northern Terminus: Abingdon, VA
- Eastern Terminus: Elkin, NC
- Branches meet: Morganton, NC
- Passes through Cowpens National Battlefield
- Terminates at Kings Mountain National Military Park
- Covers 300+ miles through four states



Background

Overmountain Victory National Historic Trail



- First National Historic Trail in eastern US
- 70 miles of publicly accessible trail currently on the ground
- Trail broken into 10 planning phases

- Chesnee to Kings Mountain National Military Park: 38 miles

OVNHT

Chesnee to Kings Mountain NMP Planning



OVNHT

Chesnee to Kings Mountain NMP Planning

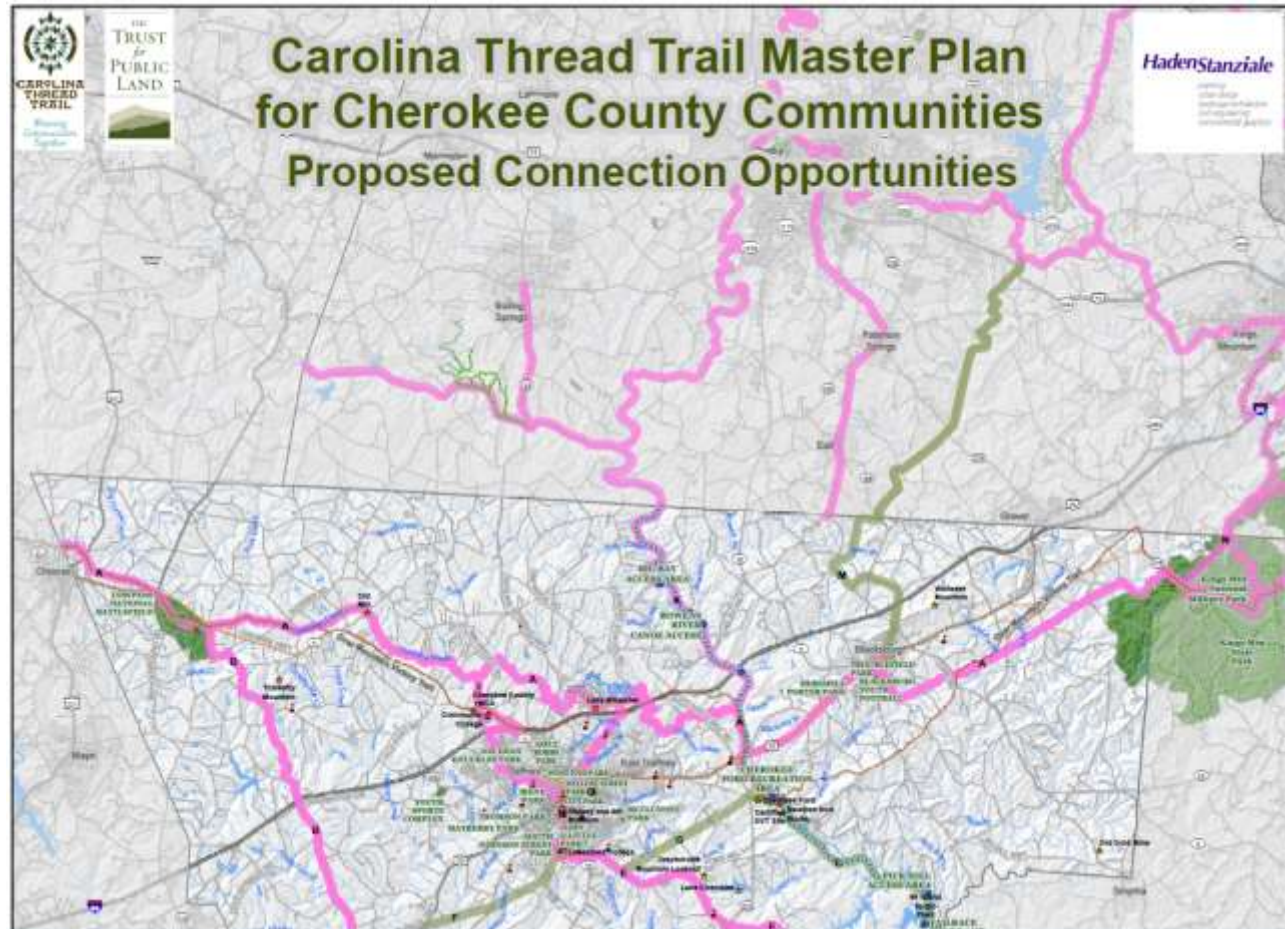


Partnerships

- U.S. National Park Service
- Carolina Thread Trail
- Gaffney Board of Public Works
- Overmountain Victory Trail Association
- Cherokee County Chamber of Commerce
- Cherokee County Recreation District
- Gaffney Downtown Business Association
- Appalachian Council of Governments
- Hess America
- City of Gaffney
- Town of Blacksburg
- Ten at the Top
- Eat Smart, Move More
- Limestone College



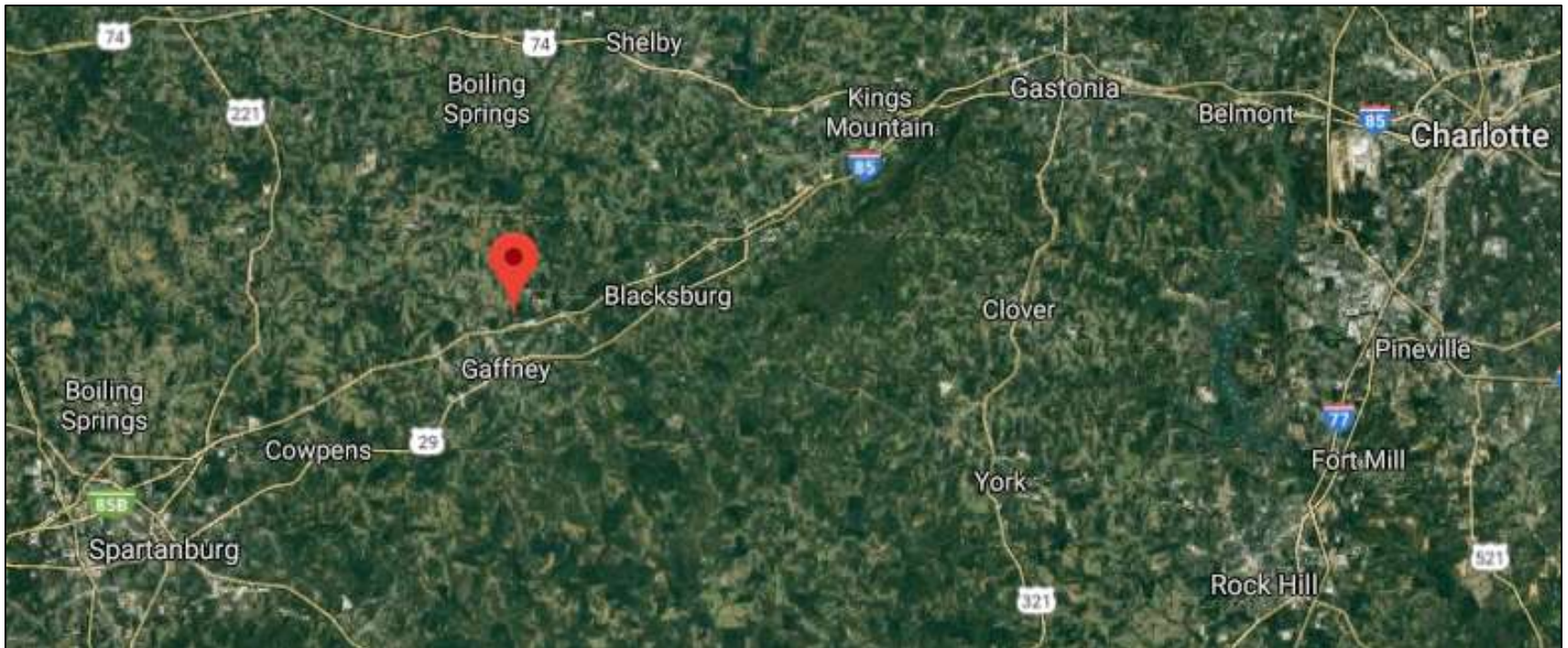
Carolina Thread Trail



OVNHT

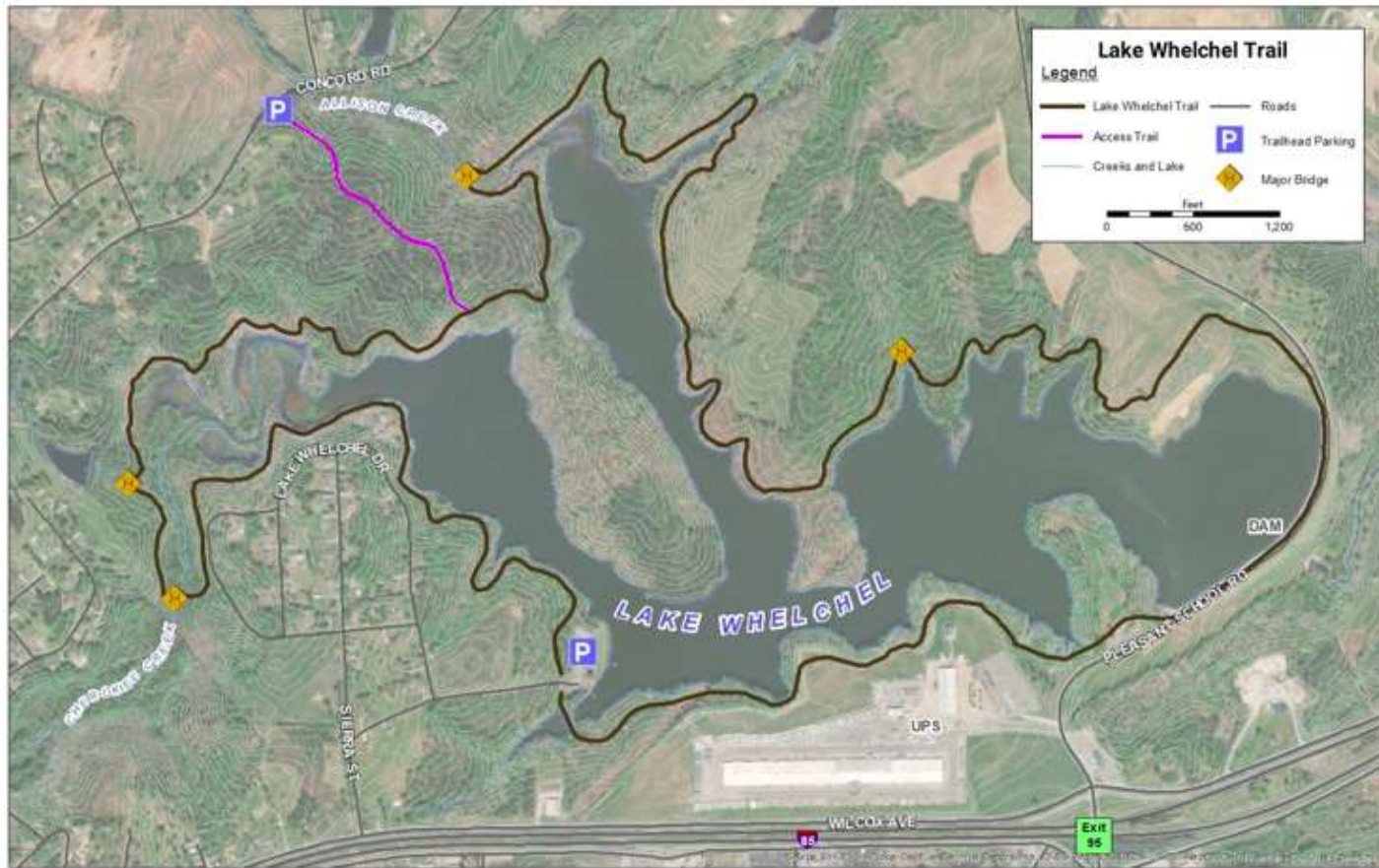
Lake Whelchel Trail

- Cherokee County, SC (only county in US with 3 National Parks!)



OVNHT

Lake Whelchel Trail



Gaffney Board of Public Works

- Own Lake Whelchel and land around it
 - Public water supply for Gaffney, SC
 - Created opportunity for trail project



Lake Whelchel Trail

Overview



Lake Whelchel Trail

Construction: September 2018 - June 2019



Lake Whelchel Trail

Construction September 2018 – June 2019



Lake Whelchel Trail Opening

June 29, 2019



Lake Wheelchel Trail Opening

June 29, 2019



Lake Whelchel Trail

Nature, Recreation & History



Lake Whelchel Trail

Nature, Recreation & History



Lake Whelchel Trail

Nature, Recreation & History



Lake Whelchel Trail & OVNHT

Future plans

- **Intercept Survey:** capture user data
- **Connections:**
 - Chesnee – Cowpens Battlefield
 - Cowpens Battlefield – Furnace Mill Dam
 - Furnace Mill Dam – Lake Whelchel
 - Lake Whelchel – Broad River
 - Broad River – Kings Mountain

Historical Trails

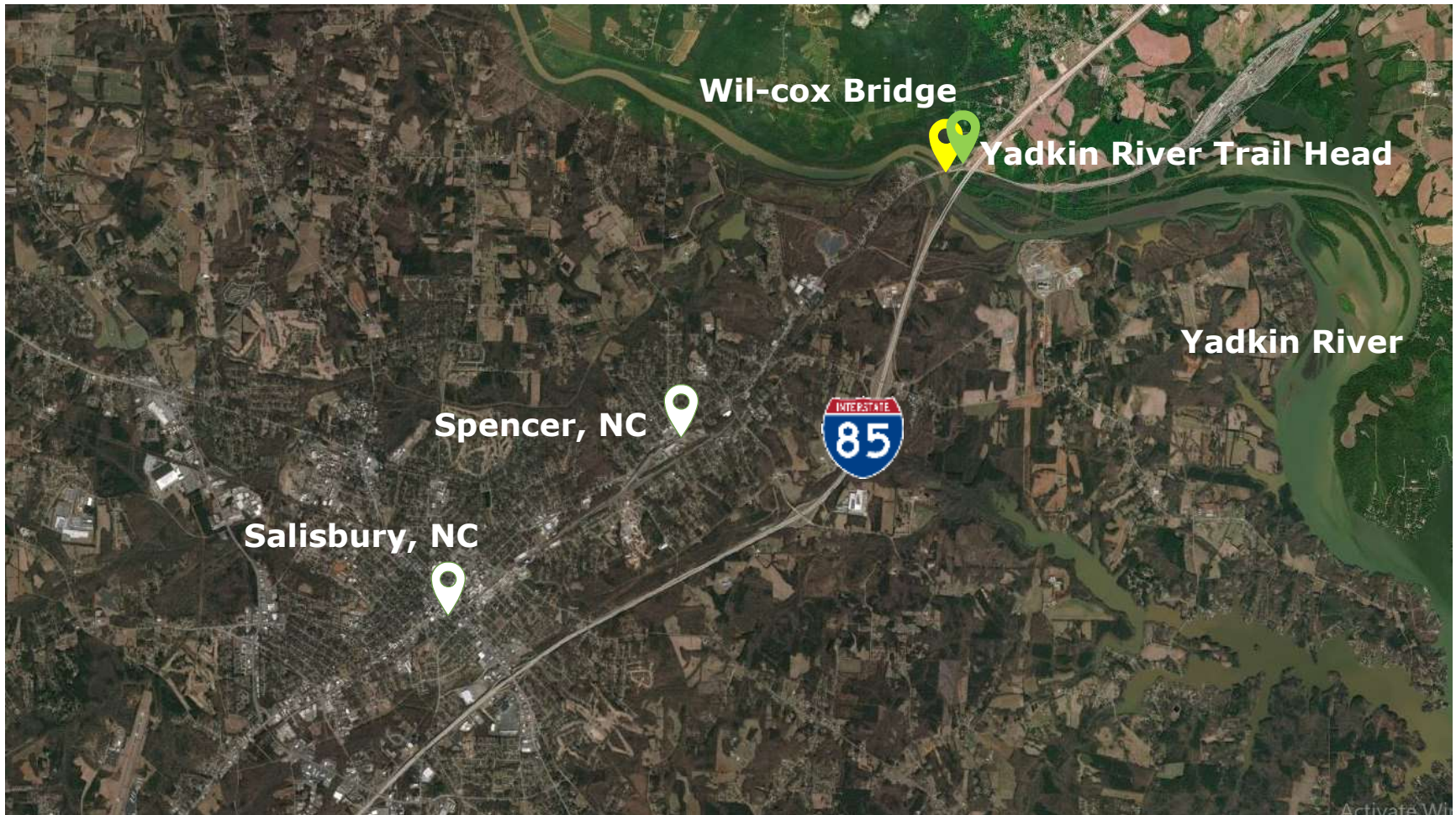
Creating Historically Themed Trails
Through Unique Collaboration



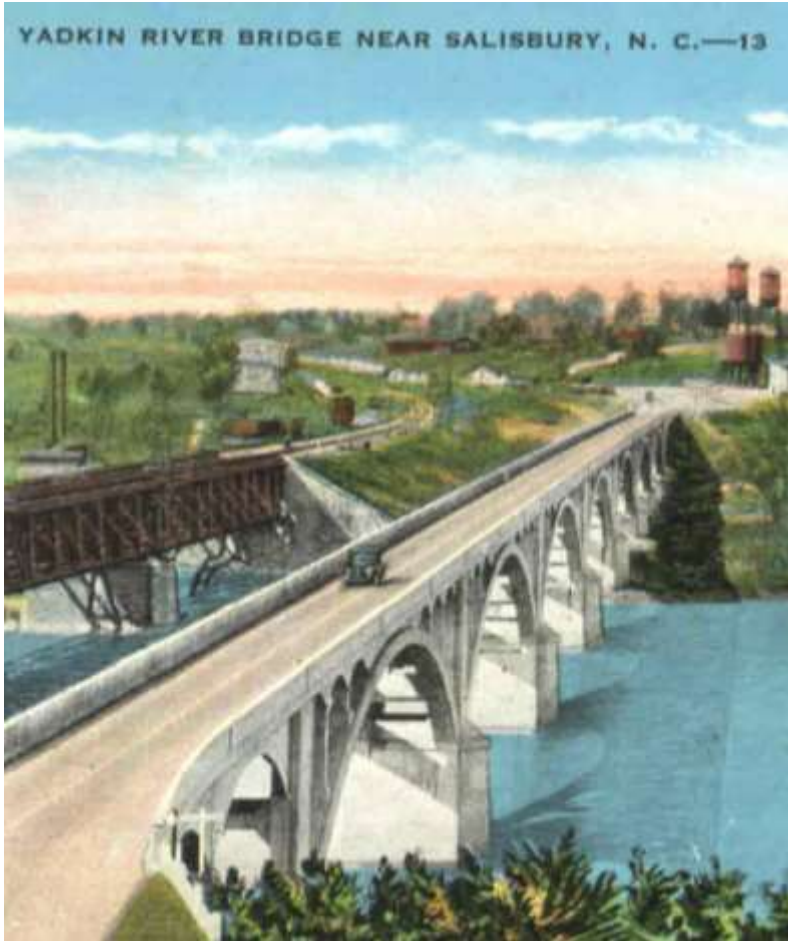
Yadkin River Trail



Yadkin River Trail



Historical People and Events



Historical People – Native Americans

Native Americans lived, traveled, and traded in this location over 10,000 years ago. These trading paths crossed the river at this very point.

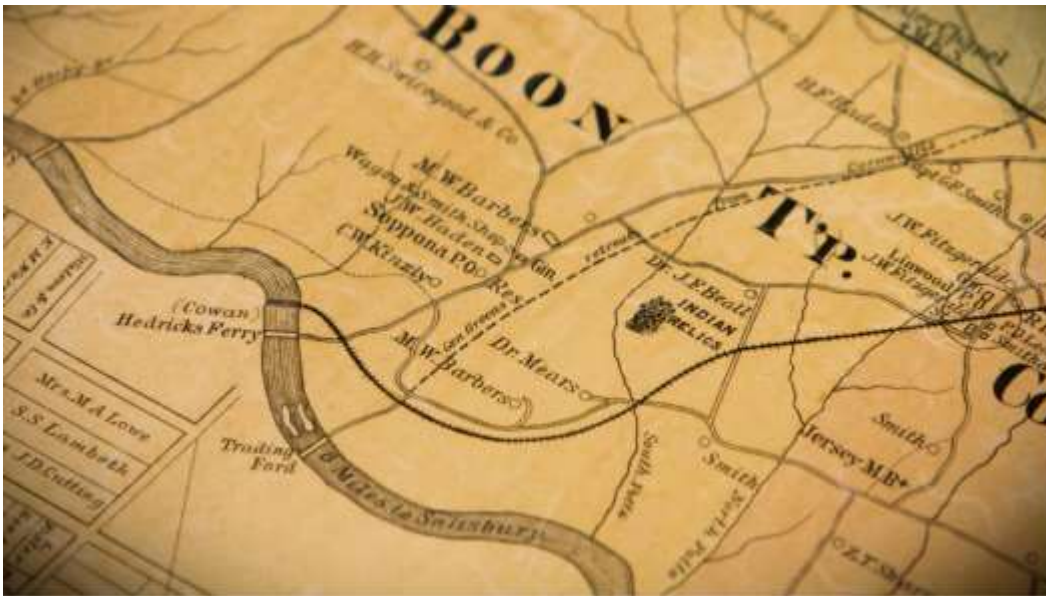


Historical Events – Trading Ford

1670 – Europeans traded with Indians and created a trade route that stretched from Fort Henry, VA to Charlotte, NC

1740s – Great (Philadelphia) Wagon Road

1755 – Town of Salisbury and other settlements were formed nearby.



Historical People - Daniel Boone

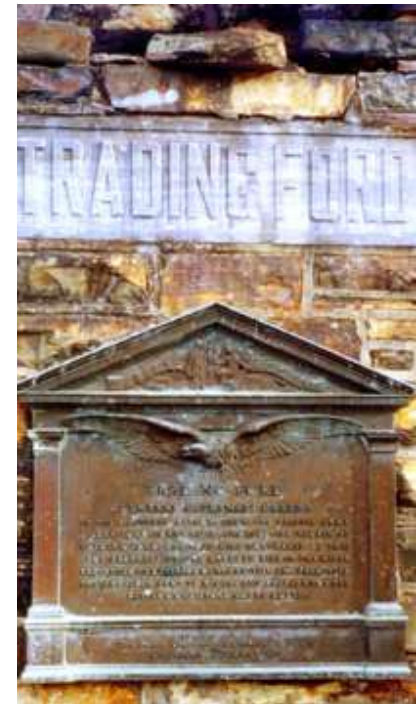
Legend has it that in 1750, Squire Boone brought his family to the Yadkin River Valley area from Pennsylvania.

16-year old Daniel Boone and his family spent their first year in Boone's cave, solidifying a sense of adventure for one of our great American frontiersmen.



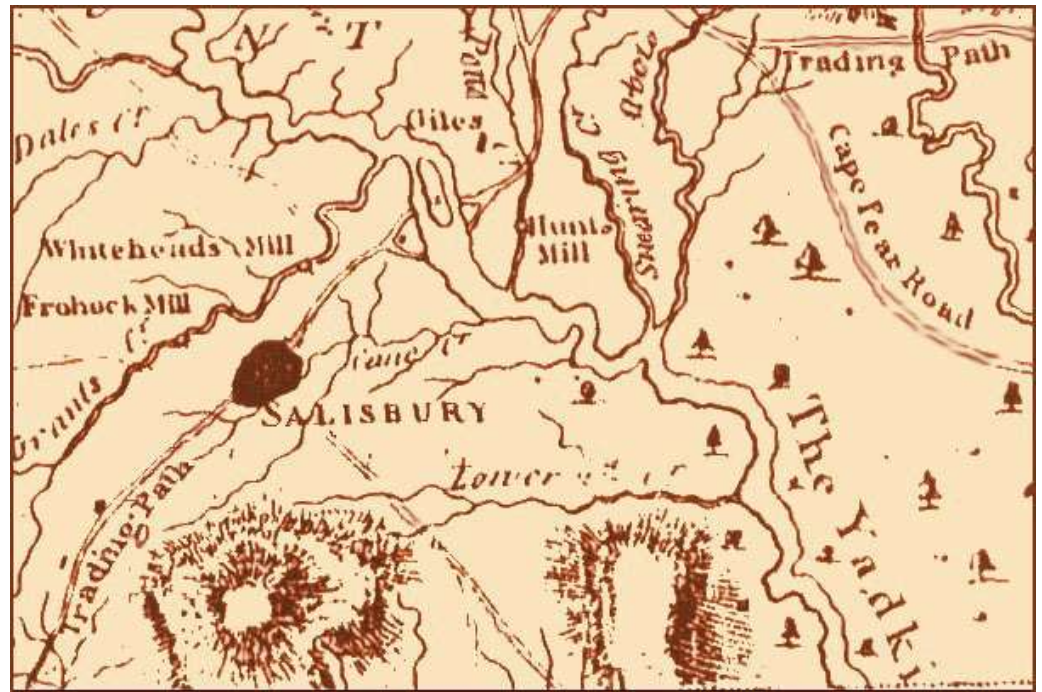
Historical Events – Revolutionary War

February 2-3, 1781



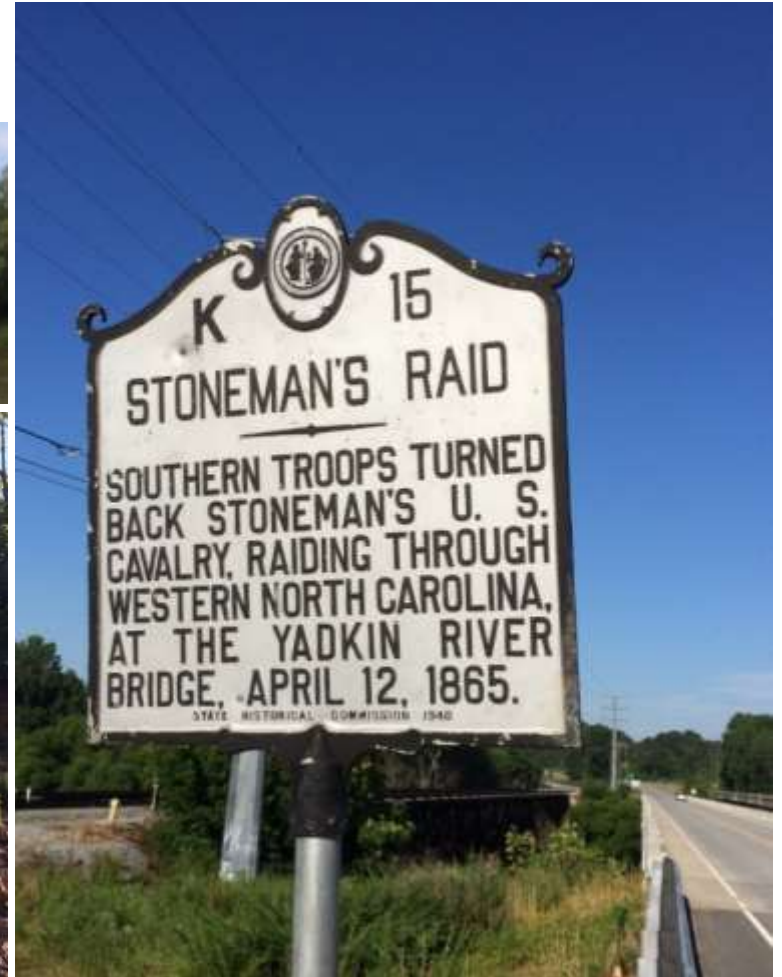
Historical People – Presidential Tour

George Washington wanted to make official presidential visits to all US States during his presidency. In 1791, he crossed at this location on his southern tour to Salem.

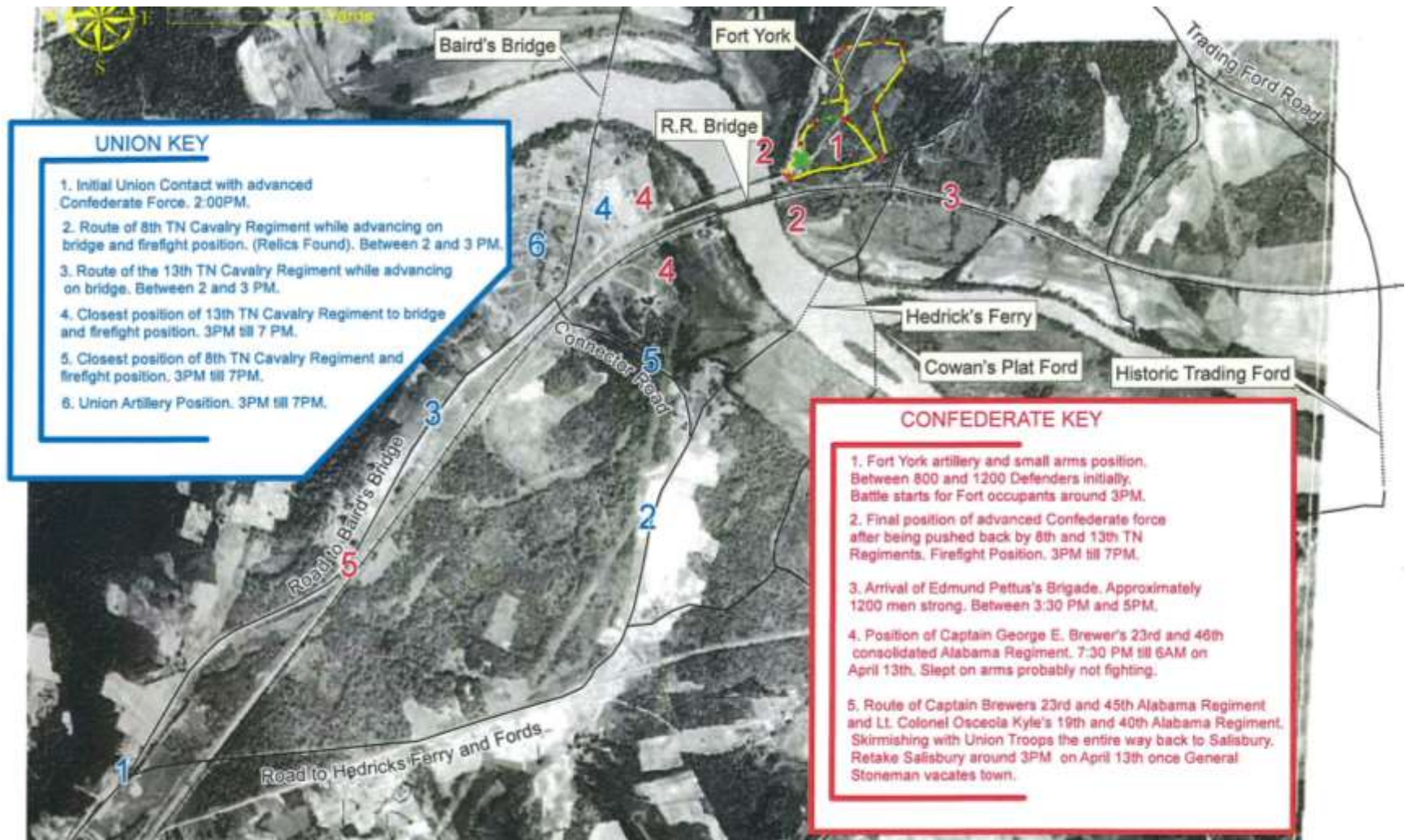


Historical Events – General Stoneman's Raid

Taking place in 1865, Stoneman's raid was one of the final battles of the Civil War.



Historical Events – General Stoneman's Raid

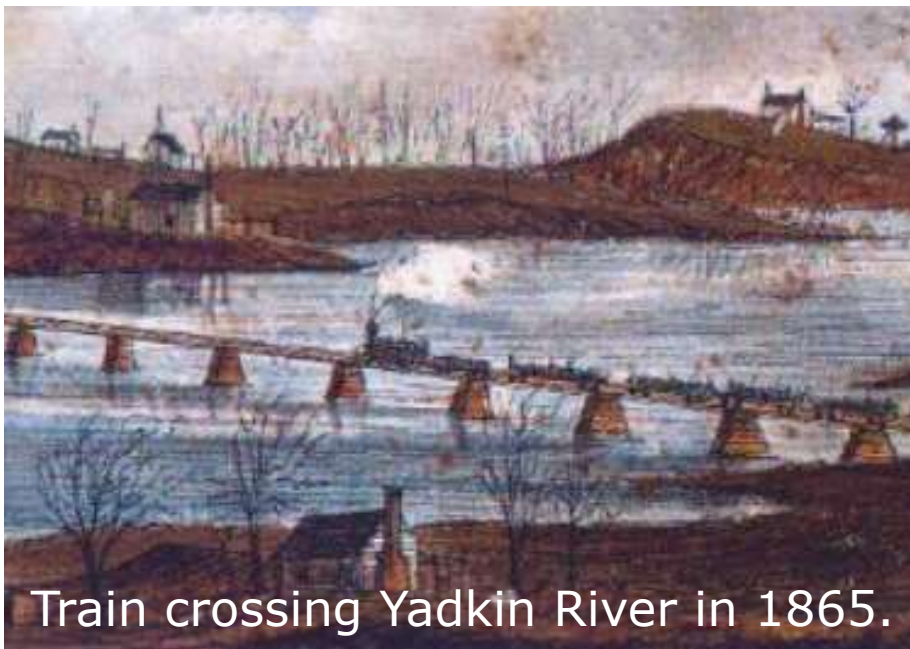


Historical Events – General Stoneman's Raid



Historical Events – Southern Railway

On August 18, 1896 the Southern Railway Train Station in Spencer, NC opened for business.



Train crossing Yadkin River in 1865.



Historical Events - Wil-Cox Bridge

1922 – 1924:	Construction
1924:	Bridge Opening



Bridging the Yadkin

COLONIZATION CHANGED SPEED AND INNOVATION.
 Railway pioneer and businessman Louis Boudier responded to the craving in 1819 by Nailing Iron: Towns of Commerce tried to build for less a covered toll bridge over the Yadkin, about 2,000 feet upstream of town. Boudier's design was one of the first of the engineer's innovation. Towns Lumber Town covered wooden bridges. Towns passed the design in 1823, named the town the bridge was completed. He would later open railroad towns as an engineer and architect, and helped design the North Carolina State Capitol in 1835, though the bridge had fallen into disrepair and closed.

THE NEXT RESPONSE TO A GROWING POPULATION OCCURRED AT THE STATE LEVEL,
 when the Legislature chartered the North Carolina Railroad to run from Raleigh west through Salisbury and on to Charlotte. During the course of 1855, the NCRR built a wooden trestle bridge over the Yadkin here to carry its line. To protect this vital rail link during the Civil War, Confederate forces built an earthen fortification—called Fort York or Camp Yadkin—on a bluff above the river's northwest bank. In April 1865 the fort repelled Union forces and the fortification earned the name. It could not withstand the assault of time, though, and soon began to slowly erode back into the land.

IN 1866 THE NCRR REPLACED ITS WOODEN BRIDGE WITH A STEEL TRESTLE STRUCTURE.
 The loss of Boudier's design after the war, however, forced farmers and other non-railroad travelers to turn back to ancient paths across the river—Frying Irons (fallen trees), Swann's Ferry (two oxcarts), and Swann's Ferry a few miles up from Swann's. In 1900, though, entrepreneurs built a new bridge—the Piedmont Toll Bridge—on the old Swann's bridge stone piers. This second toll bridge no longer stands, but the piers remain visible above the surface of the river.

NOT UNTIL AUGUST 1924 WERE DRIVERS ABLE TO CROSS THE YADKIN FOR FREE ON A NEW BRIDGE BUILT BY THE STATE.
 The structure cost \$219,540, but the State Highway Commission assumed the \$200,000 was a small price to pay for the state. "There is not a dollar of tax levied against any land, nor any, home, tax, pig, or hilly goat in either of the counties which adjoin the stream or in any other county of the State," Asheville's business and gas taxes funded the toll. The William W. Wad-Cox Bridge was not only toll-free, with its towers of reinforced-concrete open structural arches, it was aesthetically pleasing and remains a solidly built structure to the present day.

THE FIRST BRIDGE OVER THE YADKIN WAS A COVERED TOLL BRIDGE, 1819
THE NEXT BRIDGE WAS A WOODEN TRESTLE BRIDGE, 1866
THE SECOND BRIDGE WAS A STEEL TRESTLE BRIDGE, 1900
THE THIRD BRIDGE WAS A STEEL TRESTLE BRIDGE, 1924
THE FOURTH BRIDGE WAS A STEEL TRESTLE BRIDGE, 1924
THE FIFTH BRIDGE WAS A STEEL TRESTLE BRIDGE, 1924
THE SIXTH BRIDGE WAS A STEEL TRESTLE BRIDGE, 1924
THE SEVENTH BRIDGE WAS A STEEL TRESTLE BRIDGE, 1924
THE EIGHTH BRIDGE WAS A STEEL TRESTLE BRIDGE, 1924
THE NINTH BRIDGE WAS A STEEL TRESTLE BRIDGE, 1924
THE TENTH BRIDGE WAS A STEEL TRESTLE BRIDGE, 1924
THE ELEVENTH BRIDGE WAS A STEEL TRESTLE BRIDGE, 1924
THE TWELFTH BRIDGE WAS A STEEL TRESTLE BRIDGE, 1924
THE THIRTEENTH BRIDGE WAS A STEEL TRESTLE BRIDGE, 1924
THE FOURTEENTH BRIDGE WAS A STEEL TRESTLE BRIDGE, 1924
THE FIFTEENTH BRIDGE WAS A STEEL TRESTLE BRIDGE, 1924
THE SIXTEENTH BRIDGE WAS A STEEL TRESTLE BRIDGE, 1924
THE SEVENTEENTH BRIDGE WAS A STEEL TRESTLE BRIDGE, 1924
THE EIGHTEENTH BRIDGE WAS A STEEL TRESTLE BRIDGE, 1924
THE NINETEENTH BRIDGE WAS A STEEL TRESTLE BRIDGE, 1924
THE TWENTIETH BRIDGE WAS A STEEL TRESTLE BRIDGE, 1924
THE TWENTY-FIRST BRIDGE WAS A STEEL TRESTLE BRIDGE, 1924
THE TWENTY-SECOND BRIDGE WAS A STEEL TRESTLE BRIDGE, 1924
THE TWENTY-THIRD BRIDGE WAS A STEEL TRESTLE BRIDGE, 1924
THE TWENTY-FOURTH BRIDGE WAS A STEEL TRESTLE BRIDGE, 1924
THE TWENTY-FIFTH BRIDGE WAS A STEEL TRESTLE BRIDGE, 1924
THE TWENTY-SIXTH BRIDGE WAS A STEEL TRESTLE BRIDGE, 1924
THE TWENTY-SEVENTH BRIDGE WAS A STEEL TRESTLE BRIDGE, 1924
THE TWENTY-EIGHTH BRIDGE WAS A STEEL TRESTLE BRIDGE, 1924
THE TWENTY-NINTH BRIDGE WAS A STEEL TRESTLE BRIDGE, 1924
THE THIRTIETH BRIDGE WAS A STEEL TRESTLE BRIDGE, 1924
THE THIRTY-FIRST BRIDGE WAS A STEEL TRESTLE BRIDGE, 1924
THE THIRTY-SECOND BRIDGE WAS A STEEL TRESTLE BRIDGE, 1924
THE THIRTY-THIRD BRIDGE WAS A STEEL TRESTLE BRIDGE, 1924
THE THIRTY-FOURTH BRIDGE WAS A STEEL TRESTLE BRIDGE, 1924
THE THIRTY-FIFTH BRIDGE WAS A STEEL TRESTLE BRIDGE, 1924
THE THIRTY-SIXTH BRIDGE WAS A STEEL TRESTLE BRIDGE, 1924
THE THIRTY-SEVENTH BRIDGE WAS A STEEL TRESTLE BRIDGE, 1924
THE THIRTY-EIGHTH BRIDGE WAS A STEEL TRESTLE BRIDGE, 1924
THE THIRTY-NINTH BRIDGE WAS A STEEL TRESTLE BRIDGE, 1924
THE FORTIETH BRIDGE WAS A STEEL TRESTLE BRIDGE, 1924
THE FORTY-FIRST BRIDGE WAS A STEEL TRESTLE BRIDGE, 1924
THE FORTY-SECOND BRIDGE WAS A STEEL TRESTLE BRIDGE, 1924
THE FORTY-THIRD BRIDGE WAS A STEEL TRESTLE BRIDGE, 1924
THE FORTY-FOURTH BRIDGE WAS A STEEL TRESTLE BRIDGE, 1924
THE FORTY-FIFTH BRIDGE WAS A STEEL TRESTLE BRIDGE, 1924
THE FORTY-SIXTH BRIDGE WAS A STEEL TRESTLE BRIDGE, 1924
THE FORTY-SEVENTH BRIDGE WAS A STEEL TRESTLE BRIDGE, 1924
THE FORTY-EIGHTH BRIDGE WAS A STEEL TRESTLE BRIDGE, 1924
THE FORTY-NINTH BRIDGE WAS A STEEL TRESTLE BRIDGE, 1924
THE FIFTIETH BRIDGE WAS A STEEL TRESTLE BRIDGE, 1924
THE FIFTY-FIRST BRIDGE WAS A STEEL TRESTLE BRIDGE, 1924
THE FIFTY-SECOND BRIDGE WAS A STEEL TRESTLE BRIDGE, 1924
THE FIFTY-THIRD BRIDGE WAS A STEEL TRESTLE BRIDGE, 1924
THE FIFTY-FOURTH BRIDGE WAS A STEEL TRESTLE BRIDGE, 1924
THE FIFTY-FIFTH BRIDGE WAS A STEEL TRESTLE BRIDGE, 1924
THE FIFTY-SIXTH BRIDGE WAS A STEEL TRESTLE BRIDGE, 1924
THE FIFTY-SEVENTH BRIDGE WAS A STEEL TRESTLE BRIDGE, 1924
THE FIFTY-EIGHTH BRIDGE WAS A STEEL TRESTLE BRIDGE, 1924
THE FIFTY-NINTH BRIDGE WAS A STEEL TRESTLE BRIDGE, 1924
THE SIXTIETH BRIDGE WAS A STEEL TRESTLE BRIDGE, 1924
THE SIXTY-FIRST BRIDGE WAS A STEEL TRESTLE BRIDGE, 1924
THE SIXTY-SECOND BRIDGE WAS A STEEL TRESTLE BRIDGE, 1924
THE SIXTY-THIRD BRIDGE WAS A STEEL TRESTLE BRIDGE, 1924
THE SIXTY-FOURTH BRIDGE WAS A STEEL TRESTLE BRIDGE, 1924
THE SIXTY-FIFTH BRIDGE WAS A STEEL TRESTLE BRIDGE, 1924
THE SIXTY-SIXTH BRIDGE WAS A STEEL TRESTLE BRIDGE, 1924
THE SIXTY-SEVENTH BRIDGE WAS A STEEL TRESTLE BRIDGE, 1924
THE SIXTY-EIGHTH BRIDGE WAS A STEEL TRESTLE BRIDGE, 1924
THE SIXTY-NINTH BRIDGE WAS A STEEL TRESTLE BRIDGE, 1924
THE SEVENTIETH BRIDGE WAS A STEEL TRESTLE BRIDGE, 1924
THE SEVENTY-FIRST BRIDGE WAS A STEEL TRESTLE BRIDGE, 1924
THE SEVENTY-SECOND BRIDGE WAS A STEEL TRESTLE BRIDGE, 1924
THE SEVENTY-THIRD BRIDGE WAS A STEEL TRESTLE BRIDGE, 1924
THE SEVENTY-FOURTH BRIDGE WAS A STEEL TRESTLE BRIDGE, 1924
THE SEVENTY-FIFTH BRIDGE WAS A STEEL TRESTLE BRIDGE, 1924
THE SEVENTY-SIXTH BRIDGE WAS A STEEL TRESTLE BRIDGE, 1924
THE SEVENTY-SEVENTH BRIDGE WAS A STEEL TRESTLE BRIDGE, 1924
THE SEVENTY-EIGHTH BRIDGE WAS A STEEL TRESTLE BRIDGE, 1924
THE SEVENTY-NINTH BRIDGE WAS A STEEL TRESTLE BRIDGE, 1924
THE EIGHTIETH BRIDGE WAS A STEEL TRESTLE BRIDGE, 1924
THE EIGHTY-FIRST BRIDGE WAS A STEEL TRESTLE BRIDGE, 1924
THE EIGHTY-SECOND BRIDGE WAS A STEEL TRESTLE BRIDGE, 1924
THE EIGHTY-THIRD BRIDGE WAS A STEEL TRESTLE BRIDGE, 1924
THE EIGHTY-FOURTH BRIDGE WAS A STEEL TRESTLE BRIDGE, 1924
THE EIGHTY-FIFTH BRIDGE WAS A STEEL TRESTLE BRIDGE, 1924
THE EIGHTY-SIXTH BRIDGE WAS A STEEL TRESTLE BRIDGE, 1924
THE EIGHTY-SEVENTH BRIDGE WAS A STEEL TRESTLE BRIDGE, 1924
THE EIGHTY-EIGHTH BRIDGE WAS A STEEL TRESTLE BRIDGE, 1924
THE EIGHTY-NINTH BRIDGE WAS A STEEL TRESTLE BRIDGE, 1924
THE NINETYETH BRIDGE WAS A STEEL TRESTLE BRIDGE, 1924
THE NINETY-FIRST BRIDGE WAS A STEEL TRESTLE BRIDGE, 1924
THE NINETY-SECOND BRIDGE WAS A STEEL TRESTLE BRIDGE, 1924
THE NINETY-THIRD BRIDGE WAS A STEEL TRESTLE BRIDGE, 1924
THE NINETY-FOURTH BRIDGE WAS A STEEL TRESTLE BRIDGE, 1924
THE NINETY-FIFTH BRIDGE WAS A STEEL TRESTLE BRIDGE, 1924
THE NINETY-SIXTH BRIDGE WAS A STEEL TRESTLE BRIDGE, 1924
THE NINETY-SEVENTH BRIDGE WAS A STEEL TRESTLE BRIDGE, 1924
THE NINETY-EIGHTH BRIDGE WAS A STEEL TRESTLE BRIDGE, 1924
THE NINETY-NINTH BRIDGE WAS A STEEL TRESTLE BRIDGE, 1924
THE HUNDRETH BRIDGE WAS A STEEL TRESTLE BRIDGE, 1924
THE HUNDRED-FIRST BRIDGE WAS A STEEL TRESTLE BRIDGE, 1924
THE HUNDRED-SECOND BRIDGE WAS A STEEL TRESTLE BRIDGE, 1924
THE HUNDRED-THIRD BRIDGE WAS A STEEL TRESTLE BRIDGE, 1924
THE HUNDRED-FOURTH BRIDGE WAS A STEEL TRESTLE BRIDGE, 1924
THE HUNDRED-FIFTH BRIDGE WAS A STEEL TRESTLE BRIDGE, 1924
THE HUNDRED-SIXTH BRIDGE WAS A STEEL TRESTLE BRIDGE, 1924
THE HUNDRED-SEVENTH BRIDGE WAS A STEEL TRESTLE BRIDGE, 1924
THE HUNDRED-EIGHTH BRIDGE WAS A STEEL TRESTLE BRIDGE, 1924
THE HUNDRED-NINTH BRIDGE WAS A STE

Historical Events - Wil-Cox Bridge

2014: NCDOT Donates Bridge to Davidson County

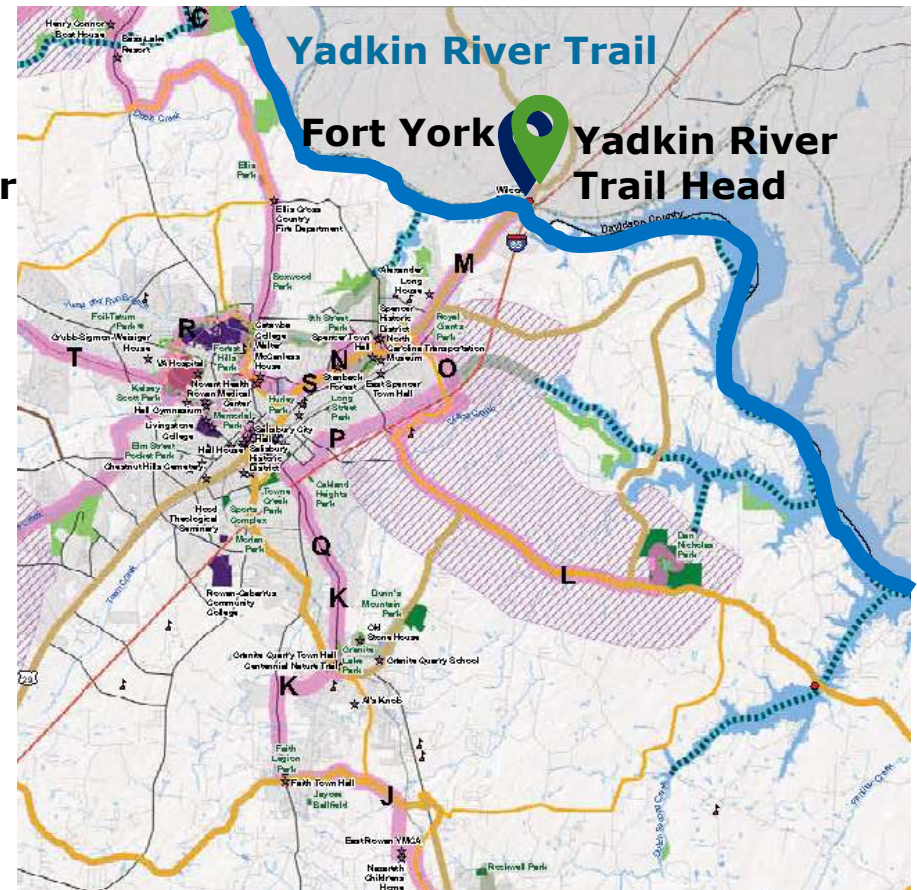




PRESENT DAY

The Ford has been a major hub of roads for over 400 years. These roads were crucial for the settlement of Northeastern Piedmont in North Carolina, as well as the entire Southeast.

Yadkin River Trail



Carolina Thread Trail Master Plan for Rowan County.

Yadkin River Trail

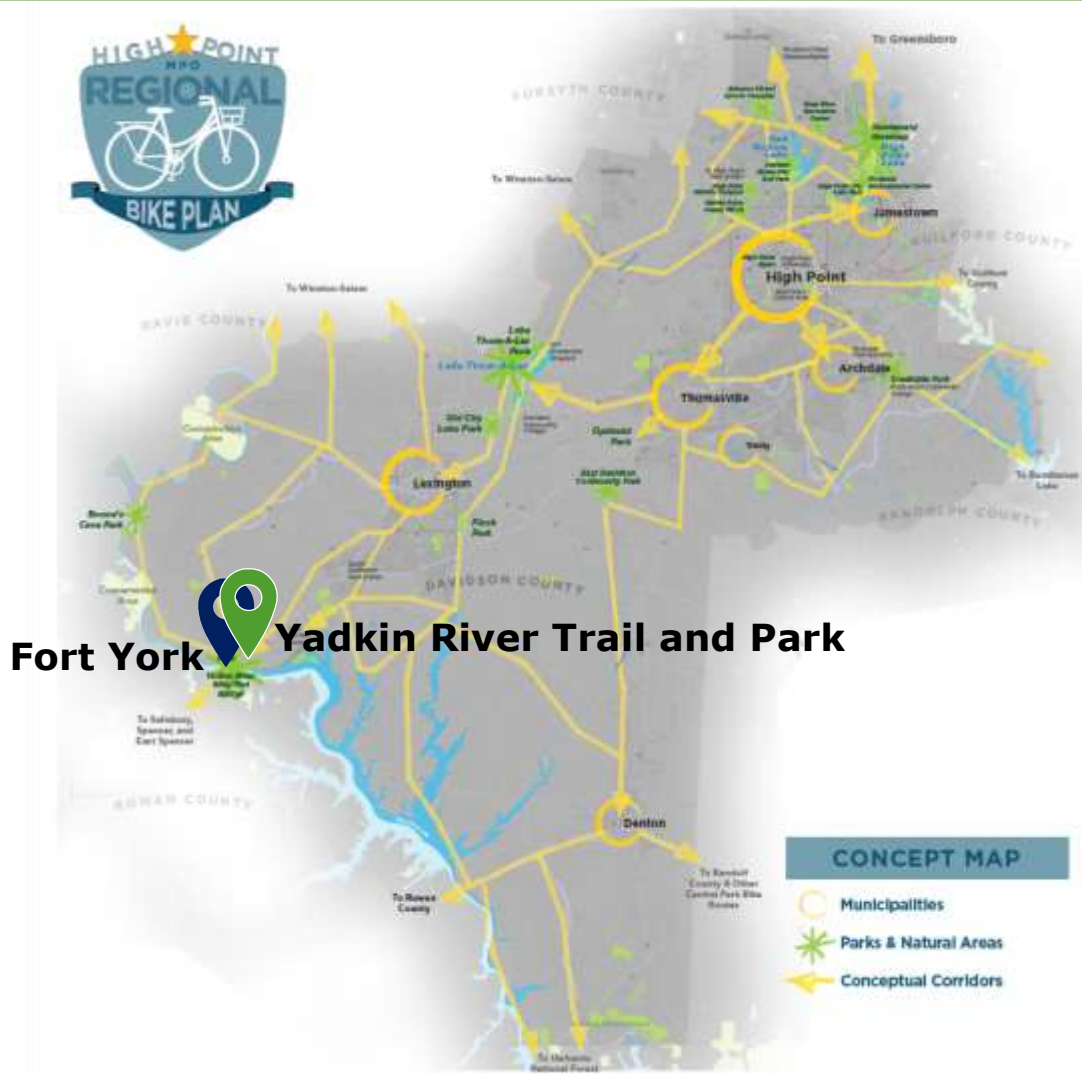


Yadkin River Trail

- Covers 9 counties and 130 Miles of Blueway
- Numerous Scenic and Historic Sites
- Connects to the CTT
- Connects to the Piedmont Legacy Trail
- Connects to Yadkin River Trailhead and Park via the York Hill Access Area



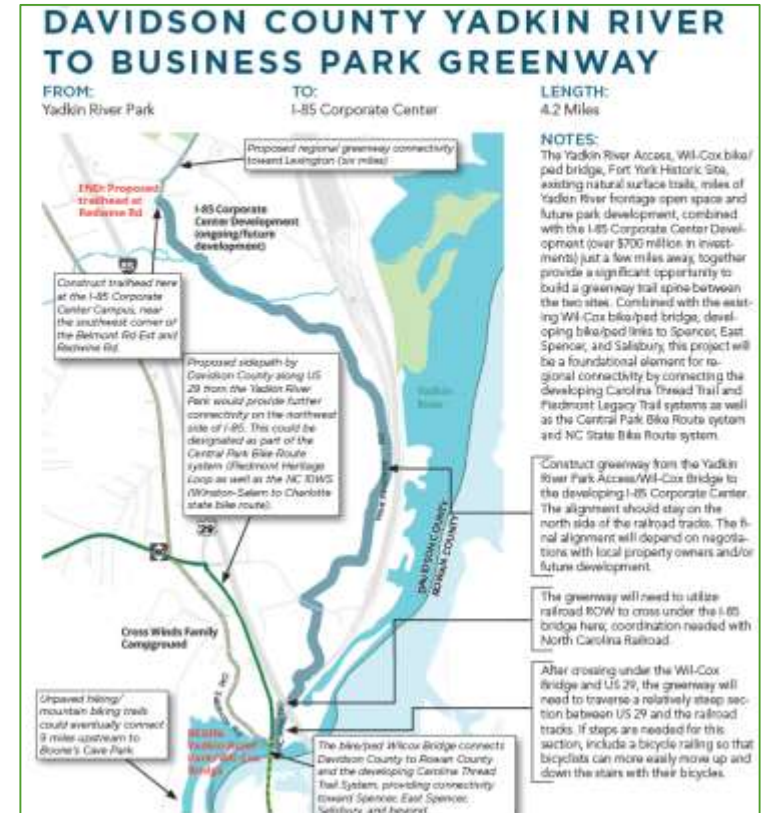
High Point Regional Bike Plan



Fort York  Yadkin River Trail and Park

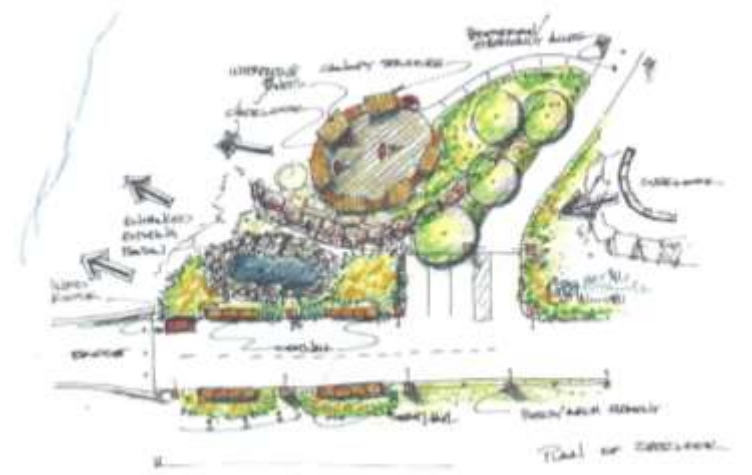
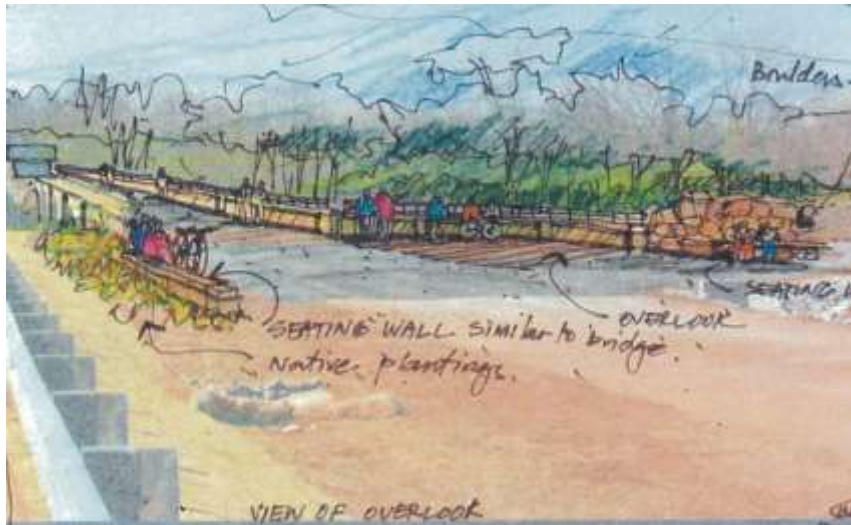
Davidson County Business Park Greenway

- Connects Yadkin River Park and Bike/Ped Bridge to I-85 Business Park
- Major Regional Destinations
- Future Connectivity to Spencer, Salisbury, and Eventually Lexington
- One mile South of Site
- 700,000 SF Chewy, on-line Pet Product Retailer Locating Facility Nearby
- Bringing 1200 jobs to Rowan County
- Budweiser Distillation Facility Nearby



Yadkin River Park and Trail – Planning Process

NCASLA design Charrette in 2014.



Yadkin River Park and Trail – Planning and Design

Fall 2016 – Spring 2017



Yadkin River Park and Trail – Planning and Design



Yadkin River Park – Fort York Masterplanning



Yadkin River Park and Trail

Ground Breaking: July 30, 2018

Construction: August 2018 – May 2019



Yadkin River Park and Trail

Construction: August 2018 – May 2019



Yadkin River Park and Trail – Grand Opening

June 21, 2019



Yadkin River Park and Trail – Entrance Plaza

Before



After



Yadkin River Park and Trail – Educational



Nature Focused Design

Before



After



Nature Focused Design



Nature Focused Design



Partnerships



Final Result



Questions? Comments?

THANK
YOU!



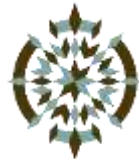
Ben Richardson

Chief of Planning and Partnerships
National Park Service
benjamin_b_richardson@nps.gov



Paul R. LeFrancois, Ph.D.

Professor of Economics
Limestone College
plefrancois@limestone.edu



Mike Bolin

Risk Manager
Gaffney Board of Public Works
mikebolin@charter.net



Jeff Ashbaugh

Senior Landscape Architect
Alfred Benesch & Company
jashbaugh@benesch.com

