



CAROLINA  
THREAD  
TRAIL

2016

REPORT TO  
COMMUNITIES

# GOING THE DISTANCE

65-Mile Rocky River/Pee Dee River  
Blueways Open River to Recreation

By Ann Gibson

**GREAT BLUE HERONS** glide overhead; a cluster of deer swim soundlessly across the channel; an elusive bald eagle skims the treetops overhead as miles and miles of secluded flatwater paddling unfold down river.

Could this idyllic adventure be just 30 minutes outside Uptown Charlotte? For the first time this spring, the answer is yes with the completion of the Rocky River and Pee Dee River Blueways.

Just over 20 miles due east of Charlotte, the Carolina Thread Trail's newly completed Rocky River and Pee Dee River Blueways traverse a rural, mostly undeveloped 65-mile stretch of river through mixed pine, hardwood and bottomland hardwood forest.

The absence of residential development, docks and motorized boats creates a true wilderness experience for kayakers and canoers. Access at eight public launches stretching from the Pharr Family Preserve in Midland, N.C., past the confluence of the Rocky and Pee Dee Rivers to Blewett Falls Lake in Lilesville, N.C., make it possible to plan trips ranging from 4 to 18-plus miles.

The Blueway, created through the efforts and funding of the Thread Trail and a regional partnership of 11 corporate, government and nonprofit organizations, offers something for paddlers of all skill levels. Because of the number of public access points, novices and families can put in for a half-day paddle while more experienced boaters can extend distances for full-day trips.

Gently sloping riverbanks provide long sight lines through the forested landscape,

interrupted only by the occasional farmhouse. White-tailed deer, raccoon, wild turkey and otters can be seen from the water. Raptors such as red-tailed hawks and barred owls, as well as great blue herons, egrets, osprey and native wood ducks live on the river.

The area also lies on the migratory route for a host of Neotropical songbirds like hummingbirds, grosbeaks and buntings. Fishing is generally better on the Pee Dee and the undeveloped tract running through the Pee Dee National Wildlife Refuge affords some of the best birding and wildlife viewing on the river.

The Rocky and Pee Dee Blueways are navigable the majority of the year. At the northernmost launch at Pharr Family Preserve, the river is narrow with class I and II rapids. Progressing downstream, the river gets wider and rockier. Paddling past launches in Oakboro and Norwood, N.C., the Rocky joins the Pee Dee River flowing south out of Lake Tillery.

The Pee Dee grows even wider, with a faster and steadier current that can flow at twice the rate of the Rocky River. Water levels on the Pee Dee are dependent on Tillery dam releases, guaranteeing higher water levels in any season.

"We're planning to have dam release information at our kiosk so people know where to go online to find out that information," says Pee Dee National Wildlife Refuge Manager JD Bricken. "Some people might want to canoe or kayak on release days,

which will be a little bit more challenging. We think the average canoer or kayaker will want to go on a non-release day to cruise along at their own pace."

"Blueways were not a focus of the original Carolina Thread Trail master plan," says Thread Trail Senior Director Andy Kane. "They kept coming up in our conversations with communities and have been well received. They are a well-used amenity and an economic driver, getting people to come to a community, eat lunch, and rent a kayak or take their boat out."

A few hours spent paddling the Rocky River and Pee Dee River Blueways makes it easy to understand why.

## Know Before You Go: Weather & Water Conditions

Weather conditions play a pivotal role in the paddling experience and trip safety, and boaters are advised to check weather forecasts for the region before getting on the water. Levels on the Rocky River can fluctuate five feet or more within an hour or two with precipitation upstream of launch sites in Charlotte. A USGS gaging station at Norwood monitors Rocky River water levels and flow rates and should be checked before a trip: [www.waterdata.usgs.gov/nwis](http://www.waterdata.usgs.gov/nwis)

The best measurement of paddling conditions is discharge, or stream flow, measured in cubic feet per second (CFS). A measurement of 175 CFS indicates a minimum water level for good paddling,

>>> Continues on page 3

## FROM THE CHAIR

A 5-mile trail crossing the N.C./S.C. state line via a 170-foot-long pedestrian bridge, linking the Millbridge and Walnut Creek neighborhoods.

A trail connecting the towns of Misenheimer, Richfield and New London in Stanly County.

A 65-mile paddle trail spanning four counties along the Rocky and Pee Dee Rivers.

These projects (read more about them on the cover and pages 6 and 7) – all of which opened in 2016 – might never have happened if the Carolina Thread Trail organization wasn't here to help planners and developers in one jurisdiction talk with their counterparts in another.

That's one of the distinctive aspects of our organization – the ability to foster regional collaboration so that great trail projects don't end at the town limit or state line.

And we're working hard to ensure that neighboring communities continue to talk to each other. This year – our 10th anniversary – we're building on our annual trail forum by hosting a series of three regional roundtables. These working sessions will bring together professionals actively involved in trail planning to discuss issues



important to advancing specific priority trails and troubleshoot challenges encountered in trail development.

It has been 10 years since the Carolina Thread Trail was successfully launched in 2007 as a project focused on preserving natural corridors and connecting people to nature through a network of connected trails. Today, with than more 250 miles of Thread Trail open to the public across our region, and individual segments continuing to grow and connect to each other, your Carolina Thread Trail is poised to become a defining characteristic for our region.

I hope you'll come explore a new segment of the Thread Trail on your own or at one of our many new guided outdoor adventures – made possible through a grant from the Women's Impact Fund.

Happy Trails,

**Alex Rankin, III**  
Chair, Carolina Thread Trail Governing Board

## FOOTNOTES

### NARENCO Sponsors Long Creek Preserve Trail

Many thanks to Corporate Trailhead NARENCO, a leading development and construction firm specializing in utility scale solar installations, for their sponsorship of Long Creek Preserve Trail. Located on conserved land next to the U.S. National Whitewater Center, this 2.1-mile natural surface trail connects to the Center's extensive network of trails.

NARENCO employees have also given their time at two volunteer workdays.



### Cordelia Park Segment of Cross-Charlotte Trails Opens May 3

This new segment of the Cross-Charlotte Trail extends the Little Sugar Creek Greenway under Parkwood Ave. through Cordelia Park to 24th St. at Davidson St. This is the first segment built jointly by the city of Charlotte and Mecklenburg County and is also part of the Carolina Thread Trail. Learn more at [CharlotteFuture.com/XCLT](http://CharlotteFuture.com/XCLT)

## STAFF

Tom Okel - Executive Director  
Andy Kane - Senior Director  
Bret Baronak - Community Coordinator  
Sean Bloom - GIS Director and Biologist  
Matthew Brantley - Davidson Impact Fellow  
Margaret Brantley - Development Director  
Robin Buckler - Finance Director  
Saxby Chaplin - Legal Counsel  
Matt Covington - Land Acquisition Director  
Vanessa Covington - Outreach Coordinator  
Alesia DiCosola - Marketing Director  
Lynda Hunley - Land Protection Legal Assistant  
Mary Ann Harrison - Program Coordinator  
Allison Schwartz - Development Associate  
Elizabeth Miller - Executive Team Assistant  
Sharon Wilson - Land Stewardship Director

## Board of Directors

Alex Rankin, III - Board Chair - CESI, President  
Shuford Abernathy - Abington Glen Village, President  
William B. Allen - Republic Crane and Equipment Co., Retired President  
Angela T. Bower - Union County Community Leader  
Patricia Clement - Bank of America  
John Collett - Collett Real Estate, Partner  
Jesse Cureton - Novant Health, EVP and Chief Consumer Officer  
Sally Daley - Girl Scouts Hornets' Nest Council, Former Executive Director  
Donna de Molina - Community Leader  
Dr. Michael Goodman - Wake Forest Baptist Health, Assistant Professor  
Sherri Gregory - Lindsey Pettus Greenway  
Dehler Hart - Springland Inc., President  
Kelly Katterhagen - BlackArch Partners, Managing Director  
Herbert Lee Lawton - Community Leader  
Christine Li - Wells Fargo, Head of Corporate Market Risk Oversight  
Dana Maness - First Bank, Vice President  
Bailey Patrick - MPV Properties, LLC, Managing Partner  
Marshall Rogers - Owner of TWOROG Holding LLC, Retired  
Susanne Sellers - Bank of America, Retired Executive  
Keith A. Smith - Carolinas HealthCare Systems, Sr. VP & General Counsel  
H. Thomas Webb, III - Faison, President and CEO  
Edward Weisiger, Jr. - Carolina CAT, President and CEO

## CONTACT

Office:  
4530 Park Road, Suite 420  
Charlotte, N.C. 28209  
704-342-3330  
[Carolinathreadtrail.org](http://Carolinathreadtrail.org)



#threadtrail



## GOING THE DISTANCE

*Continued from front cover*

while readings of 250 to 1200 indicate good paddling conditions with faster current, higher water and fewer rapids.

Lake Tillery dam releases create a faster flow and a more challenging paddle on the Pee Dee River section of the Blueway. On non-release days, conditions lend themselves to a leisurely paddle more suited to novices and those wanting to explore the river at a slower pace.

Duke Energy will be implementing a recreation flow release program this spring with 11 scheduled dam releases of 800-1000 CFS. The scheduled releases will occur on Saturdays beginning May 20 and will be posted on the Duke Energy website by May 15. Visit [www.duke-energy.com/home](http://www.duke-energy.com/home), click on "Explore Our Lakes & Recreation" and "Flow Releases." Choose "Yadkin Pee Dee" from the drop-down menu to view the dam release schedule.

As with the Rocky, Pee Dee water levels fluctuate with precipitation upstream, so dam release information should be

combined with weather monitoring for a more complete picture of river conditions.

### TAKE THE TRIP

Wildlife resources officials and outfitters who have paddled the Blueways recommend the following trips. Actual paddling time varies depending on weather, water conditions and paddler ability.

#### Half-day trips (3-4 hours):

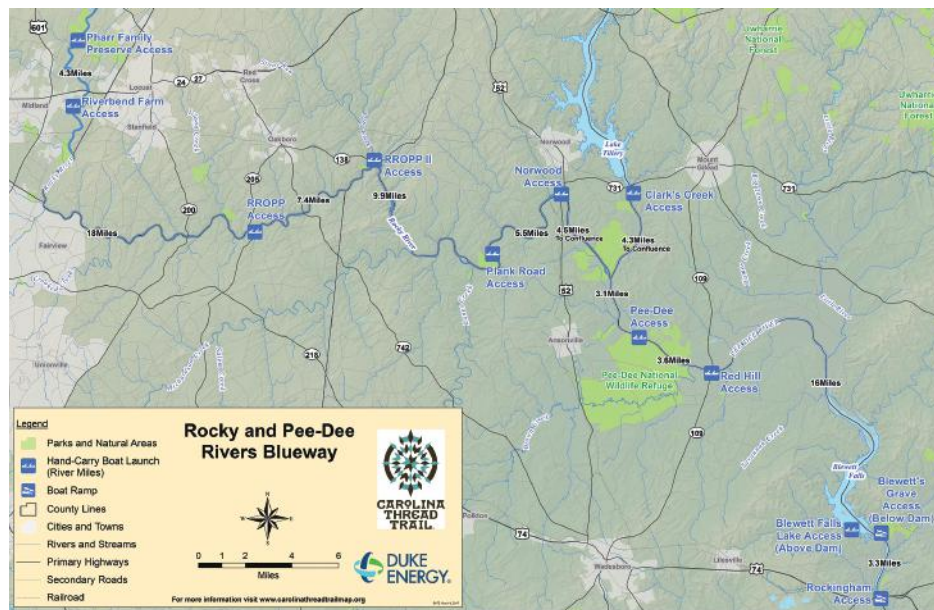
- Pharr Family Preserve to the Riverbend Farm in Midland (4.5 miles)
- Pee Dee National Wildlife Refuge to the Red Hill/Hwy. 109 (3.5 miles)



Pharr Family Preserve launch in Midland, N.C.



Paddling the Rocky River near the Pharr Family Preserve in Midland, N.C. Photo by Nancy Pierce.



## Two More Blueways to Experience

### South Fork River Blueway

This 8-mile blueway starts at Spencer Mountain and continues downriver to Cramerton, N.C.

### Catawba River Blueway Mountain Island Lake Section

Three canoe/kayak launches create a 6.1-mile blueway stretch.

### Lake Wylie Section

Approximately 27 miles of flatwater paddling through the Catawba River in N.C. into Lake Wylie and S.C.

### Lake Wylie Dam to Highway 9

A 30-mile stretch of flatwater on the Catawba River between Lake Wylie Hydro Dam and the upper end of Fishing Creek Lake.

## Rocky River/Pee Dee River Blueways Regional Partnership

Carolina Thread Trail  
Duke Energy  
N.C. Department of Commerce  
Recreation Equipment, Inc. (REI)  
N.C. Wildlife Resources Commission  
Rocky River Organization for Preservation & Protection (RROPP)

Town of Midland, N.C.  
Town of Oakboro, N.C.  
Town of Norwood, N.C.  
Town of Wadesboro, N.C.  
Anson County  
Pee Dee National Wildlife Refuge/U.S. Fish & Wildlife Service



# FOOTNOTES

## Lincolnton Roundtable First in Series

The Thread Trail hosted 23 local trail practitioners March 16 at a Round Table at the Laboratory Mill in Lincolnton, N.C. The working session brought together representatives from Gaston, Cleveland, Lincoln, and Catawba Counties to address issues important to advancing trails and resolving challenges encountered in trail development. This was the first of three Round Tables in 2017 and each will focus on a different geographic area of the Thread Trail region.

## Giving Tuesday Raises \$50,000 for Trails

Thank you to everyone who donated to the Thread Trail during SHARE Charlotte's 2016 #GivingTuesdayCLT campaign! From Nov. 15-29, the Thread Trail raised over \$50,000, which will help fund the expansion of the 140-mile North-South Spine segment.

## Thread Trail Board Grows with New Members

The Carolina Thread Trail welcomed seven new members to its governing board in January:

**Shuford Abernathy**, of Conover, N.C. – President of Abingdon Glen Village

**John Collett**, of Charlotte, N.C. – Partner of Collett Real Estate

**Sally Daley** of Waxhaw, N.C. - Former Executive Director of Girl Scouts Hornets' Nest Council

**Dehler Hart** of Fort Mill, S.C. – President of Springland Inc.

**Kelly Katterhagen** of Charlotte, N.C. – Managing Director of BlackArch Partners

**Bailey Patrick** of Charlotte, N.C. – Managing Partner of MPV Properties, LLC

**Marshall Rogers** of Albemarle, N.C. – Retired owner of TWOROG Holding LLC



Photo by Todd Hess

## Julia James Recognized as 2016 Volunteer of the Year

By Ann Gibson

Trail Master Julia James, of Mount Holly, N.C., traces her passion for trail building back to a volunteer experience on the Appalachian Trail. "One year, I spent my birthday cutting back mustard garlic on the AT," she recalls. "I said to myself, 'I bet I could do this around home.'" Julia signed up for a work day on the South Fork Trail in McAdenville, N.C., and has been volunteering ever since.

Since retiring from her career as a nurse/midwife, one of Julia's primary goals has been introducing others to the outdoors. She monitors trail conditions on the South Fork Trail, leads volunteers at trail workdays and is a Trail Ambassador at local events and festivals.

Thread Trail Senior Director Andy Kane recalls meeting Julia on a Seven Oaks Preserve Trail hike. "She asked questions and was so engaged, I started calling her Grasshopper," says Andy, referring to the classic teacher/student relationship in *The Karate Kid*.

Julia's advocacy efforts extend into her everyday life. To encourage friends and family to get involved, she documents her outdoor adventures on social media. Wearing her Thread Trail T-shirt on a recent trip to the S.C. coast, she was approached by a woman asking, "What's this Carolina Thread Trail all about?" Julia was only too happy to explain. "What's important to me is to promote health in the community," she says. "It's about nature, physical activity, and being good stewards of the environment."



Our Queen City Joyride explored the Little Sugar Creek Greenway in March. These monthly, guided, group bike rides include a free B-cycle bike rental and sweet snack from a local shop.



Members took part in an 8-mile guided hike in March on the Blue Star Trail, part of the Thread Trail, at Anne Springs Close Greenway in Fort Mill, S.C.



The Kings Mountain Gateway Trail released 15 monarch butterflies in October 2016 at its new butterfly garden. The garden, which will eventually bloom across 3.5 acres at "the Plateau," of the trail, was planted by Duke Energy Kings Mountain Generation Support Facility employees and local community volunteers to provide habitat for pollinators.

Students from across Wingate's campus joined forces in September to remove invasive species along the Mineral Springs Greenway. The workday was part of W'Engage, a Wingate program that encourages students to interact with local partners and work together to transform the community.



## 2016 ANNUAL REPORT

# HERE'S HOW WE HELPED COMMUNITIES ADVANCE TRAILS IN 2016

Thanks to your support, we're helping local municipalities plan and implement trail projects and advance the Carolina Thread Trail across our 15-county region.

## Education & Technical Advice

Our ninth Trail Forum on Dec. 6 was attended by more than 250 people and featured a keynote address from Mecklenburg County Park and Recreation Director Jim Garges.

This annual conference features educational sessions led by experts in trail planning, funding, design and construction. It's the only event of its kind in this region to bring together hundreds of planners, engineers, architects and vendors. Throughout the year, our staff also works closely with local trail planners to offer guidance and recommendations tailored to individual projects.

**"We couldn't have built the many miles of trail without the grants from the Carolina Thread Trail! And the annual forum has given our team a lot of great ideas for us to put to use at the KMGT! It's great to be connected to a regional trails network."**

- Shirley Brutko, Executive Director, Kings Mountain Gateway Trails, Inc.

## Regional Collaboration

We provide the vision for a system of connected trails and greenways throughout a 15-county region by facilitating collaboration among neighboring communities so that

trails can continue across city, county and state lines.

While much of this happens behind the scenes, a project like the Cross-State Bridge shines a light on the significance of this role. In 2016, we helped planners in Waxhaw, N.C., coordinate with officials



in Lancaster County, S.C., to connect two segments of trail across the N.C./S.C. border. The result: a 170-foot long suspension bridge spanning Twelve Mile Creek, connecting two pieces of existing trail to create a nearly 5-mile long segment.

And new in 2017, the Thread Trail will host three regional roundtables to engage local trail practitioners and resolve challenges encountered in trail development.

## Grant Funding

To date, the Thread Trail has donated more than \$5.4 million to local communities as a catalyst for creating segments. Local communities and nonprofits with adopted master plans can apply for grants to support trail planning, building or maintenance, and often these funds are leveraged into matching funds from state and federal funding sources.

**In 2016, the Thread Trail awarded 13 grants totaling \$637,856!** Seven of the eight new segments of Thread Trail that opened in 2016 received funding from the grants program.

Grant Recipient	Amount	Project
Catawba Indian Nation	\$20,000	Catawba Nation Greenway - Construct natural surface trail with one bridge along the Catawba River
Catawba Lands Conservancy	\$38,000	Rocky River Blueway - Construct kayak/canoe launch in the Town of Norwood, NC
Children's Hope Alliance	\$24,944	Richardson Greenway - Construct .38-mile paved trail to extend Greenway north in Iredell County
City of Salisbury, NC	\$40,500	Salisbury Greenway - Design bridge and conduct FEMA No Rise Certification in Rowan County
City of Salisbury, NC	\$91,062	Salisbury Greenway - Construct .63-mile gravel trail and two suspension bridges in Rowan County
City of Shelby, NC	\$38,200	First Broad River Trail - Convert former railbed into a multi-use, crushed concrete trail that will connect to existing Thread Trail in Cleveland County
City of Statesville, NC	\$150,000	Statesville Greenway - Construct a paved greenway to connect two Thread Trail segments in Iredell County
Cleveland County, NC	\$32,500	Kings Mountain Gateway Trail - Acquire land or trail easements and conduct surveying services for a 1.5-mile extension to connect to Crowder's Mountain State Park
Gaffney Local Development Corporation	\$20,000	Overmountain Victory National Historic Trail - Develop a management/development plan for a future 33-mile segment in Cherokee County, SC
Lindsay Pettus Greenway, Inc.	\$75,000	Lindsay Pettus Greenway - Complete all design and permitting for the 2-mile Phase I of the Greenway in Lancaster County
Town of Claremont, NC	\$29,550	Claremont Trail - Acquire trail easements along future trail corridor connecting the Town to Bunker Hill Covered Bridge in Catawba County
Town of Cramerton, NC	\$3,050	Goat Island Greenway - Install crosswalk signs/signals near Stuart Cramer High School in Gaston County
Town of Oakboro, NC	\$75,000	Rocky River Blueway - Construct parking lot and launch structure on Long Creek
<b>Total 2016</b>	<b>\$637,856</b>	
<b>Cumulative Total Since 2009</b>	<b>\$5,407,463</b>	

>>> Continued on page 8



# NEW EXPERIENCES ON THE THREAD TRAIL

## 2016 TRAIL OPENINGS

In 2016, eight new segments of the Thread Trail opened across the region, including the 170-foot cross-state suspension bridge near Waxhaw, N.C. and three new kayak and canoe launches along the Rocky River and Pee Dee River Blueways.



### NEWTON HERITAGE TRAIL CONNECTOR

Newton, N.C.  
½ mile / Hiking

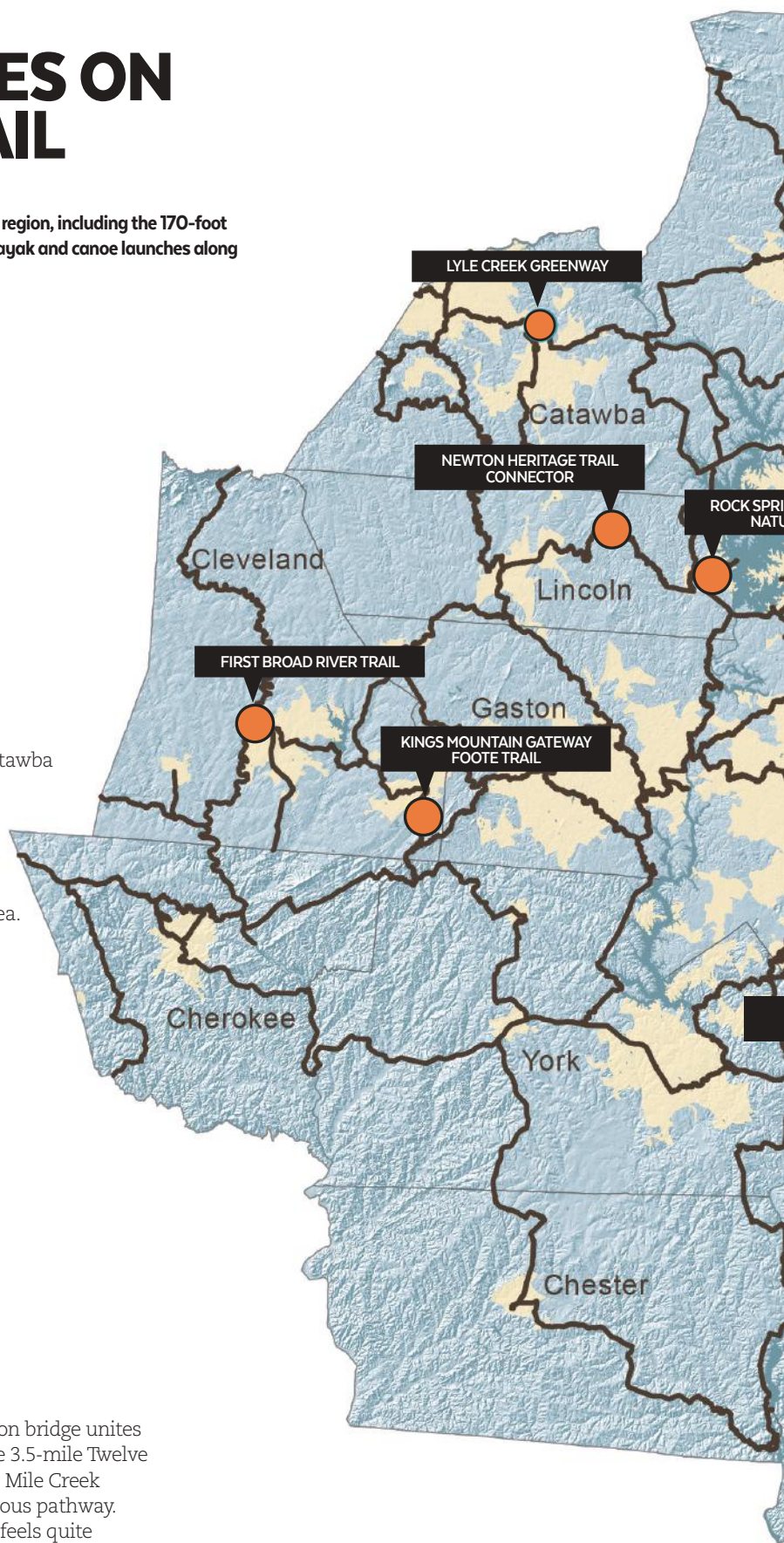
This new half-mile section of Thread Trail crosses the Catawba County Government Center Campus linking downtown Newton to the Newton Heritage Trail and provides approximately 8 miles of continuous pathway. Local volunteers organized by Catawba County Planner Chris Timberlake built the trail, and a local Eagle Scout built the trail map kiosk, trail guideposts and a picnic area.



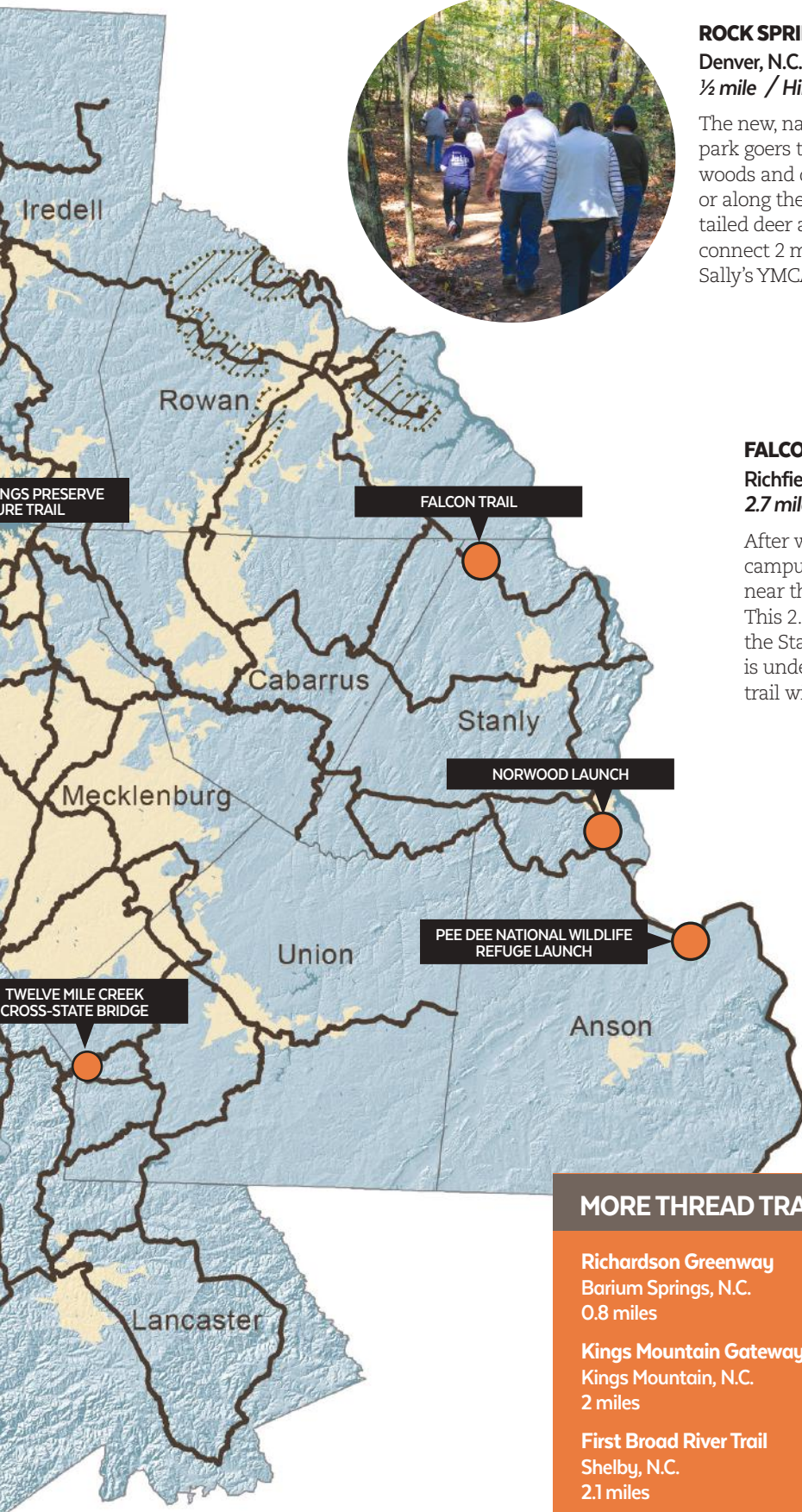
### TWELVE MILE CREEK CROSS-STATE BRIDGE

Waxhaw, N.C. and Lancaster, S.C.  
Hiking

Spanning Twelve Mile Creek, this 170-foot-long suspension bridge unites sections of Thread Trail in both Carolinas. It connects the 3.5-mile Twelve Mile Creek Trail on the S.C. side, with the 1.4-mile Twelve Mile Creek Greenway in Waxhaw, creating nearly 5 miles of continuous pathway. The S.C. side which runs along the creek's embankment feels quite remote and almost mountainous, and yet is close to more than 2,000 homes.







### ROCK SPRINGS PRESERVE NATURE TRAIL

Denver, N.C.  
½ mile / Hiking

The new, natural surface trail at Rock Springs Preserve Park gives park goers the opportunity to leave the playground and step into the woods and down along Castor Creek. From the wildlife viewing area or along the trails you may encounter a box turtle, barred owl, white-tailed deer and numerous types of birds. This trail will eventually connect 2 miles south to the existing Forney Creek Trail that crosses Sally's YMCA.

### FALCON TRAIL, PART OF THE MISENHEIMER GREENWAY

Richfield and Misenheimer, N.C.  
2.7 miles / Hiking, Mountain Biking

After winding through farms, forests and Pfeiffer University's campus, the Falcon Trail ends at a newly constructed sidewalk near the intersection of U.S. Hwy. 52 and Wesley Chapel Rd. This 2.7-mile stretch of the Thread Trail network connects the Stanly County towns of Richfield and Misenheimer. Work is underway to acquire an additional 7 miles of trail so that trail will continue to New London.



### MORE THREAD TRAIL OPENINGS

**Richardson Greenway**  
Barium Springs, N.C.  
0.8 miles

**Kings Mountain Gateway Foote Trail**  
Kings Mountain, N.C.  
2 miles

**First Broad River Trail**  
Shelby, N.C.  
2.1 miles

**Lyle Creek Trail**  
Conover, N.C.  
1.4 miles

**Rocky River Blueway**  
RROPP Nature Park Kayak Launch,  
Oakboro, N.C.

Norwood Kayak Launch, Norwood, N.C.

Pee Dee National Wildlife Refuge  
Kayak Launch, Wadesboro, N.C.



## 2016 ANNUAL REPORT

# HERE'S HOW WE HELPED COMMUNITIES ADVANCE TRAILS IN 2016

## Outreach And Programs

We build community support for trails by hosting environmental education and public programs such as guided hikes, paddles and other outdoor events along segments of the Thread Trail. With the hiring of CLC and the Thread Trail's first program coordinator, we've dramatically increased our program offerings. **During the first six months of expanded programming in 2016, we connected 2,066 people to nature through 44 programs with 23 partners such as the N.C. Wildlife Federation, Catawba Riverkeeper and N.C. Native Plant Society.**

We also generate awareness of the Thread Trail by participating in community events and festivals (more than 40 in 2016) and speaking to community groups such as Leadership Charlotte, Rotary Clubs, Sunday School classes and more.

To see a list of upcoming events, visit [carolinathreadtrail.org](http://carolinathreadtrail.org) and click "Events and Programs."



Members and friends enjoy a guided hike along the Thread Trail at Crowders Mountain State Park.



Thread Trail staff spread the word about trails at more than 40 festivals and other events throughout the year.



Through our partnership with HikeNC, we offer group hikes along segments of the Thread Trail throughout the year. Here, a group tackles the Girl Scout Hornets' Nest Trail in Statesville, N.C.



Enjoying the Little Sugar Creek Greenway on a Queen City Joyride, guided group bike rides open at all!



Members enjoy their annual autumn gathering Fall into the Thread at Lenny Boy Brewing Co.



## 2016 ANNUAL REPORT

### Volunteer Recruitment And Training

We recruit and train volunteers to help build and maintain segments of Thread Trail across the region. In addition to numerous public workdays throughout the year, we also host many corporate teams. A special thanks to our volunteer program sponsor Carolinas HealthCare System.



Carolinas HealthCare System

In 2016, we hosted **27 volunteer workdays** with **518 volunteers** who provide a total of **1,546 hours**.

Thanks to the following corporations for sponsoring workdays in 2016:

- Antea
- Bank of America
- Carolinas HealthCare System
- Davidson College – Service Odyssey
- Duke Energy
- Ernst & Young
- Huron Consulting
- Husqvarna
- Lowes
- NARENCO
- Niagara Bottling
- Regions Bank
- REI
- Wells Fargo



Regions Bank employees removed invasive species along the South Fork Trail in McAdenville, N.C.



Husqvarna employees removed dead trees along the Forney Creek Trail in Denver, N.C.



Duke Energy and Wells Fargo employees built an observation deck for waterfowl viewing along the Forney Creek Trail.

### Trail Masters

Our Trail Masters program teaches volunteer leaders the latest trail building and maintenance techniques so they can serve as crew leaders during volunteer workdays. Trail Masters commit 40 hours of volunteer service to the Thread Trail annually for three years and play a vital role in establishing trails throughout our communities.

In 2016, we had 48 active Trail Masters. Since the program was developed in 2011, we have trained 82 Trail Masters.

#### Special Thanks To Our Active Trail Masters:

Gregg Antemann	Charlie Lieske
Michael Blackburn	Allen Lowrance
Scott Brown	Patrick Lynch
Eric Brunsvold	Bert Lynn
Stephanie Bush	Jerry Myles
Beth Chuck	Bill McCarter
Ben DeBow	Lisa McCarter
Bruce Elliot	Mike Moore
Bill Farar	Jimi Moore
Joe Fisher	Charlotte Morley
Byron Haigler	David Nelson
John Harris	Sheri Osborne
Brian Hinson	Jeff Pinnow
Sarah Genay	Chip Sell
Carolyn Genay	Colleen Simmons
Jason Grice	Madison Simonson
Natalie Jackson	Keith Sorensen
Julia James	Whit Strunk
Lisa Jenkins	Josh Taylor
Kirk Johnston	Chris Timberlake
Mark Kincaid	Jason Toon
Gerry Kinglsey	Jeff Watson
John Kinley	Tom Watson
Dillon Lackey	Ashley Wittmer

### Plan a Corporate Workday

Looking for a way to give back to the community and engage your employees? Sponsor a corporate volunteer workday! Community service activities include trash pickup, invasive species removal and other trail maintenance for groups of 25 to 100.

To learn more, contact Vanessa Gorr, Outreach and Volunteer Coordinator at [Vanessa@carolinathreadtrail.org](mailto:Vanessa@carolinathreadtrail.org).

## 2016 FINANCIAL REPORT

### Operating Expense by Program

	2015	2016*	2017 Budget
Personnel cost	\$532,771	\$572,247	\$645,000
Office/Admin	\$79,815	\$68,523	\$82,000
Outreach & Development	\$71,152	\$94,469	\$139,000
Operations	\$16,677	\$19,661	\$26,450
<b>Total Operating Expense</b>	<b>\$700,415</b>	<b>\$754,900</b>	<b>\$893,050</b>

### Fund Balances

Assets	Fund Balance: 12/31/2016 *
Cash	\$2,489,776
Outstanding Pledges	\$449,955
Endowment Fund	\$2,830,808
<b>Total Assets, Net</b>	<b>\$5,770,539</b>

\* Unaudited



# Thank You, 2016 DONORS!

Your generous support enables us to advance trails throughout a 15-county region in North and South Carolina. This list includes corporate and individual gift to the Carolina Thread Trail made in the 2016 calendar year. We have tried our best to ensure all names and amounts are correct. If you see an error, please contact Vanessa Covington at [Vanessa@carolinathreadtrail.org](mailto:Vanessa@carolinathreadtrail.org).

## CORPORATE TRAILHEADS MEMBERS

Volunteer Program Sponsor  
Carolinas HealthCare System

### \$1,000 and up

Akers Foundation  
Husqvarna  
Pharr Yarns  
Arboguard Tree Specialists  
Daimler Truck Financial  
Eagles Nest Outfitters  
Flat Tire Trio  
Hartsell & Williams, P.A.  
Huron Consulting Group INC  
Lenny Boy Brewing Co.  
NARENCO  
REI Charlotte-Pineville  
Stewart  
Trail Design Specialist  
WALC (Wandering Around  
Lincoln County)  
Whole Foods Market  
Wildlands Engineering, Inc.

### \$250 and up

Alta Planning + Design  
Arete Structures  
Benesch  
Bloc Design, PPLC  
Blue Ridge Trail Works, Inc.  
Brix Wood Fired Pizza  
Bungalow Picnic Company  
Contech Engineered Solutions  
CupLux Coffee  
Design Center of the Carolinas  
ESRI  
Girl Scouts, Hornets' Nest Council  
LandDesign  
McSpadden Custom Home  
Mountain Khakis  
PermaTrak  
Share Charlotte  
Stantec Consulting  
The Dodd Studio  
US National Whitewater Center  
Walton Development and  
Management, INC.  
WithersRavenel  
Yellow Cape Communications  
Adams Outdoor Advertising  
Design Resource Group  
Jesse Brown's Outdoors  
Kings Mountain Gateway Trails, Inc.

## DONORS

### \$1,000 and up

Bill and Sharon Allen  
Derrick Close  
Deborah and Jud Little  
Tom and Amy Okel  
Sharon and Alex Rankin  
Robert Ranson  
Ruth and Colin Shaw  
Mr. and Mrs. Carl M. Spangler, Jr.  
Pam and Andy Warlick

### \$250 and up

Melissa Cornwell  
Rufus M. Dalton  
East Lincoln Good Fellows  
Pat Ellison, II  
Kemper Gibson  
Mark Miller  
Nancy Pierce  
Adam Purser

## GREENWAY GALS MEMBERS

### \$250 and up

Ana Aceti  
Dr. Katherine Armstrong  
Laura Baker  
Sylvia Brydon  
Lisa Cichan  
Virginia Columba  
Lisa Compton  
Donna de Molina  
Amy Diamond  
Miriam A Dixon  
Anne Flint  
Janet Frederick  
Rebecca Giblin  
Karen Grad  
Jane and Gary Green  
Kelly Katterhagen  
Launa Kendle  
Stephanie Kimball  
Alice Lehman  
Carrie Lucas  
Susan McDonough  
Susan McKeithen  
Stephanie Nolan  
Mary Onak  
Holly Robbins  
Ed and Carla Rose  
Dianne Roth  
Susan Scherer  
Sonia Scholl  
Marjorie Serralles-Russell  
Amy Steinmetz  
Anne and Robert H. Stolz  
Chandra Torrence  
Lana Truong  
Julie Velardo  
Cydney Watterson  
Sarah Watts  
Anja and David Zimmerman

## INDIVIDUAL TRAILHEADS MEMBERS TRAILBLAZER

### \$100 and up

Bob Amos  
Kaye Amos  
Brent Anderson  
Jill Andersen  
Dan Aronson  
Jay Bajorek  
Sylvia Bajorek  
Cathy Bannette  
David Basri  
Vickie Basri  
Amy Blumenthal  
Philip Blumenthal  
Bradna Bowers  
Amanda Buchanan  
Christopher Buchanan  
Betty Burns  
Jennifer Church  
Howard M. Cohen  
Lori Couick  
Tod Creech  
Michael Daley  
Sally Daley  
Lisa K. Eanes  
Leonard DeGrace  
Tanya DeGrace  
Elyn Dortch  
Mike Dortch  
Susan Durgin  
Trevor Durgin  
Louis Eubanks  
Elizabeth Fender  
Cynthia Ferguson

Carol Fogarty  
Joe Frey  
Leonard Fumi  
Jim Garges  
Tamara Gentle  
John Ghent  
Larry Hamrick  
Lara Hamrick  
Margaret Herdegen  
Delores Howell  
Rande Howell  
Andy Kane  
Florence Kane  
Virginia Kern  
Arthur Kohn  
Janice Janken  
June Lamba  
Ken Lamba  
Jim Lawton  
Lynn Lawton  
Priscilla Laua  
Bin Li  
Christine Li  
Nancy Lopez  
Frank Lorch  
Lucinda Lucas  
Desiree B. MacSorley  
Brian Malec  
Robert Manross  
Jennifer Mattox  
Marti McCracken  
James McDade  
J. Wiley McKeown  
Jocelyn McLaughlin  
Patrick McLaughlin  
Phillip McMillan  
Kevin Mikeworth  
Laura Mikeworth  
Michelle Moore  
Joseph A. Morris  
Andrea Mueller  
Charles Murray  
Melissa Murray  
Amy Nason  
Ron Nason  
Jennifer Neurohr  
William Niven  
Kim Nofsinger  
Tomas O'Bannon  
Franklin Pendleton  
Pamela Pendleton  
Amber Perry  
Jeffrey Pinnow  
Lucy Quintilliano  
Eleanor Raispis  
Tom Raispis  
Judie R. Ratcliffe  
Stacy Raynor  
Justin Rollins  
Allen Sanford  
Doug Satterfield  
Bill Schiffli  
Karen Schmitt  
Tom Schmitt  
Neal Sigmon  
Colleen Simmons  
Robert Stein  
Arkon Stewart  
Whit Strunk  
Laura Taylor  
Jill Tahan  
Laura Thompson  
Sharon Thornhill  
Ted Trahan  
Daphne Traywick  
Susan Turner  
Rebecca Walters  
Michael Wang  
Melanie Williams

Andrew Yavorski  
Mia Youncr

## TREKKER

### \$50 and up

Daila Allen  
Charles W. Allison, III  
Caron Andrus  
Jodyln Balanda  
Luther Barringer  
Bill Bartee  
Steve Bassett  
Todd Boggess  
Becky Boshell  
Donald Boshell  
Nick Bushon  
Julie Chapman  
Nathan Clark  
Anton Crooks  
John Collier  
Susan Cox  
William Cox  
Brian DenOuden  
Alessia Dicosola  
David Edwards  
Bonnie Foulds  
Thomas Fox  
Eileen Friars  
Anne B. Furr  
Calvin Gaddy  
Leo Gady  
Mario Gelabert  
Ann Gray  
Steven Gray  
Martha Griffin  
Bjorn Hansen  
Lisa Hansen  
Janie Hatchell  
Matthew Hedrick  
Christine Helms  
Mark Helms  
Charles Hodges  
Lynn Hodges  
Kim V. Hombs  
Andrew Huneycutt  
Nancy Jacobsen  
Emily Johnson  
Harry Johnson  
Sandy Johnson  
Penelope Karagounis  
David Kern  
Llew King  
Elaine Kirby  
Nancy Leach  
Dorothy Lodge  
Daniel Love  
Patricia Major  
Mara Malakoff  
Walter Marcin  
Bud Martin  
Dawn Martin-Williams  
Debbie Martin  
Tom and Robin McCoy  
John McDowell  
Sheryl McGavin  
Greg McKenna  
Audrey Mellichamp  
Larry Mellichamp  
Jennifer Loftin  
Janet Nelson  
Lowell Nelson  
Jeanne M. Neumann  
John Northey  
Martha Odum  
Tommy Odum  
Patti Oswald  
Trent Patterson  
Carl Peoples  
Nicoletta Peoples

Mike Peters  
Christopher Petrik  
Mary Pratt  
D. Scott Pyle  
Rita Pyndus  
Teresa Radford  
Diana Register  
Ralph Renninghofg  
Mike Riemann  
Adam Rogers  
Trina Rumfelt  
Louis A. Schmitt, Jr.  
Heather Schoonover  
Mark Sergeant  
Mary Stauble  
Peter Stauble  
Ellen Stenstrom  
Eric Stenstrom  
Heather Stickney  
Evan Stratton  
George Stratton  
Steve Strother  
Crystal Sundaramoorthy  
Krista Swartz  
Christine Tartton  
Kim Turner  
Matt Turner  
Diane Turner  
Ret Turner  
Barbara Vargochik  
Bryant Waldkirch  
Susan Waldkirch  
Cathy Weaver  
Mike Weaver  
Anna B. Weil  
Veronica Westendorff  
Leslie Westmoreland  
Richard Williams  
Diane Willis  
Janine Willis  
Dick Winters  
Suzy Winters  
Michelle Withers

## HIKER

### \$25 and up

Ambarish Annappureddy  
Howard Baker  
Elizabeth Birch  
Emily Blackwell  
Sean Bloom  
Mandy Bloom  
Mark Brooks  
Kenny Brown  
Amy Bumgardner  
Dee Bumgardner  
Claire Burnham  
Roxette Busani  
Sharon Campbell  
Leslie Carpenter  
Roger Coates  
Charles Cook  
Gwen Cook  
Gary Cooler  
Daniel Cronin  
Kenneth Davis  
Laverne Davis  
Jennifer DeWitt  
Ryan Dukes  
Max Duggins  
Todd Dunn  
Maria Frey  
Denise Finck-Rothman  
Shirley Frank  
Nancy and Mark Franza  
Catherine Freedberg  
Rick Gamertsfelder  
Dale Gentle  
Paul Gettys  
Karen Glazar  
Kathy Goodman  
Molly Grassel  
Wilberta Gould  
Lorin Hamilton  
Jeremy Harris  
Andrew Hickling  
Rachel G. Hill  
Meryl Imbrey  
Leigh James  
Denise Johnston  
Charles Jones  
Brad Julian  
Evdoxia Karagounis  
April Kinley  
John Kinley  
Regina Kiser  
Kevin Kruse  
Barbara Lake  
Kathleen Mack  
Leila Manship  
Lydia Matthews  
Erika Marlin  
Leah Martin  
Jennifer Marquardt-Leach  
Bill McCarter  
Lisa McCarter  
Alex McDonald, Sr.  
Amy McGuire  
Dick McMillan  
David McGinnis  
Chuck McShance  
Andrew McSwain  
Mike Moore  
Helen Moreno  
Carol Morris  
Wayne Morris  
Tom Nicholson  
Lynea Nye-Beeson  
Jason Philbin  
Liza Pratt  
Robert Rittase  
Andy Rowe  
Michael Sandy  
Harold Shapiro  
Ju-lan Shen  
Isabel Skovgaard  
Cindi Smith  
Jen Smith  
William Sowell  
Ryan St. John  
Dana Stooenke  
David Stoner  
Frank Sutterlin  
Marilyn Sutterlin  
Brittany Sylvester  
Daryl Tilley  
Julie Tuggle  
Dr. and Mrs. Van Vagianos  
Kent Walker  
Dr. Thomas D. Walsh  
Tong Wang  
Emily Watson  
Jeffrey Watson  
Matt Whitlow  
Christy Wilhelm  
Kelsey Willis  
Craig Wyant  
Devona Wyant  
Sharon Wilson  
Up to \$25  
Nancy Grimm  
Justin Lehmann  
Steve McGlothlin  
Abigail Medlin  
Geoff Steele  
Gail Petruska



# WE COULDN'T DO IT WITHOUT YOU

## Thank you, Capital Campaign Donors

### \$1,000,000+

The Bank of America Foundation  
C.D. Spangler Foundation  
The Duke Energy Foundation  
Foundation For The Carolinas  
John S. & James L. Knight Foundation  
Turner Family Foundation  
The Wachovia Wells Fargo Foundation

### \$100,000-\$999,999

Advantage Carolina Foundation  
Bill and Sharon Allen  
Anonymous  
Mr. and Mrs. Philip Blumenthal  
Blumenthal Foundation  
Amy and Robert Brinkley  
Carolinas HealthCare System  
The Charlotte Mecklenburg Community Foundation  
Dickson Foundation, Inc.  
Founders Federal Credit Union  
Lowe's Charitable and Educational Foundation  
Piedmont Natural Gas Foundation  
Mr. and Mrs. Jerry Richardson  
Ruth and Colin Shaw  
W. Duke Kimbrell Family Foundation

### \$50,000-99,999

Crandall and Erskine Bowles  
Mr. and Mrs. Harry and Rebecca Dalton  
REI  
Southwood Corporation  
William and Nancy Stanback  
James Whitton  
Women's Impact Fund

### \$10,000-49,999

Bernard N. Ackerman  
Akers Foundation  
Blum, Inc.  
Peggy and Bob Culbertson  
David Belk Cannon Foundation  
Herbert Doss  
Anonymous  
Lynne and John Ford  
Kathie and Bill Grigg  
Julie and Howard Levine  
Mike Mabry  
Monsanto Fund  
Ben Rudisill  
Tonya and Stoney Sellers  
Pam and Andy Warlick  
York County Council  
Elizabeth B. Yost Trust  
Z. Smith Reynolds Foundation

### \$1,000-\$9,999

Anne Springs Close Greenway  
Anson Bank and Trust Co.  
Arboguard Tree Specialists  
Bank of Stanly  
Benchmark Trails Inc.  
BlackArch Partners  
Jane W. Bolick  
Cabarrus Bank and Trust Company  
Carolinas Medical Center  
Charity Games  
Derek and Sallie Close  
CMH Space Flooring Products, Inc.  
Rufus M. Dalton  
Glenn DeGeorge  
Susan DeVore  
Roger and Sally Dick  
Domtar Corporation  
Michelle and Kelly Frenzel  
Karl and Sandy Froelich  
Ann Gaither

Anne and Peter Gilchrist  
Greg and Sherri Gregory  
Dale F. Halton and Fred Wagner  
James Boyce Garland Memorial Fund  
Jesse Brown's Outdoors  
Johnston, Allison and Hord  
Ed and Page Kizer  
Legacy Shares, LLC  
Mr. and Mrs. Joseph Lipe  
Little

Lowe's of Belmont and Gastonia  
Sallie and Fred Lowrance  
Luquire George Andrews, LLC  
Mervil Paylor Design  
Mountain Khakis  
Natural Resource Group  
N.C. Department of Transportation  
Sally and Lane Ormand  
Richard J. Osborne  
The Outdoor Foundation  
Bailey and Mildred Patrick  
Positex Group  
Sharon and Alex Rankin  
SCBT  
Kellie and Jeff Scott  
Susanne and Jerry Sellers  
Mr. and Mrs. Carl M. Spangler, Jr.  
The Tin Kitchen  
Joye Thomas  
Thorlo  
Turner Construction Company  
U.S. National Whitewater Center  
Uwharrie Capital Corp.  
Wells Fargo Insurance Services, USA  
Tammy Whaley  
Whole Foods Market Charlotte  
Gregory Wolf

### UPTO \$999

All About the Pipes Plumbing, Inc.  
Bob and Kaye Amos  
Amanda Anderson  
Attitude Nation  
B and B Distributors, Inc.  
Rebecca Bahn  
Dianne and Brian Bailey  
Mr. and Mrs. Lonnie Baucom  
Baxter Town Center  
Rob Bierregaard and Cathy Dolan  
Birdsong Brewing Co.  
Sean and Mandy Bloom  
Blue Ridge Trail Works, Inc.  
Jill Blumenthal  
Carl A. Boggs  
Lynda Boozer  
Dr. and Mrs. Edward and Angela Bower  
John and Kristin Hills Bradberry  
Mr. J.D. Bricken  
Brixx Wood Fired Pizza  
Kelly Brooks  
Geoff Brown  
Ann and Ric Browning  
Gretchen Caldwell  
Jeannette K. Campbell  
Carmel Country Gardeners  
Carolina Title Company, LLC  
Carolina Wetland Services  
Eric Caruthers  
Catawba Valley Outing Club  
Centered Wellness Carolinas, LLC  
Chiquita Classic  
Rich Coleman  
Barbara Conrad  
Elizabeth Cook  
Shane Cooper  
Bruce and Debbie Darden

Davidson Garden Club  
Alvaro and Donna de Molina  
Jennifer Dillon  
The Dodd Studio  
Elyn and Mike Dortch  
Down Home Baking Company  
Earth Fare  
East Lincoln Good Fellows  
Sam Erwin  
Anne Essaye  
Jonathan Evans  
Leila Evans  
Nancy and Ralph Falls  
Elizabeth Fender  
Renee Fiott-Mitchell  
Four Friends Brewing LLC  
Maria Frey  
Charles and Frances Furr  
Rebecca Giblin  
Ruth Ellen and Kenneth Gill  
Girl Scouts, Hornets' Nest Council  
Melissa Girt  
Kristy Goelzer  
Bari Gorelick  
Jane Green  
Green Gardeners Club  
C. Greenwald  
Nancy Grimm  
Larin Hamilton  
Katherine L. Hardwick  
Suzanne M. Harnois  
Janie Hatchell  
Peter R. Herran  
Hikers of Iredell Club  
Sylvia and Raymond Holmes  
Cornelia and Roderick P. Hoover  
Hornwood  
Ken and Marilee Huntley  
Lori A. Jennings  
Nancy F. Johnson  
Penelope Karagounis  
Susan Kearney  
Laura Kenkel  
Virginia Kern and Bradna Bowers  
Stephanie and James Kimball  
Mark Kincaid  
John and April Kinley  
Elaine Kirby  
Ryan and Shannon Klar  
Mabel Koo  
Louise Laganieri  
LandDesign  
Kathy Langley  
Leaf and Petal Garden Club  
Mr. and Mrs. Stephen P. Leary  
Kate Lee  
Stacy Leff  
Shawn Lemond  
Lenny Boy Brewing Co.  
Daniel Love  
Allison Ludwig  
Brian Malec  
Mrs. Johanna D. Maness  
Robert Manross  
Henry Martinat  
Kathy McAllister  
Roline H. McGinnis  
Phillip McMillan  
Lindsay and Chuck Meakin  
Diane Meirowitz  
Merri Mint Garden Club  
Suzanne M. Merritt  
Debbie Mijatovic  
Mimi Nichols  
Palmetto Conservation Foundation  
Jagruti Patel

Pamela and Franklin Pendleton  
PermaTrak  
Anne and Scott Perper  
Piedmont Patriots Chapter NSDAR  
Rhonda Pappen  
Selina Pradhan  
Premier  
Betsy Prichard  
Katherine Rabun  
Judie R. Ratcliffe  
Jane S. Rotteree  
Mr. and Mrs. William G. Reynolds  
Jo Ann Rodgers  
Joanne Empey Rodriguez  
Carla Rose  
Jessica Rossi  
Rotary Club of Cabarrus County  
Michael and Heidi Rotberg  
Chris and Robin Sanford  
Terry Satterwhite  
Marjorie Serralles-Russell  
Paul Shealy  
Marcia Simon  
Site Solutions  
Laura and Grady Smith  
Gregory Sobieski  
South Carolina Horseman's  
Council  
Southward Solar Designs, Inc.  
C. Marie Spearman  
Statesville Women's Club  
Kim and Dale Stewart  
Stewart  
William Stokes  
Ta'Liah Massage  
Tarheel Trailblazers  
Jerry Taylor  
Annette Telljohann  
Mrs. Emily M. Thomas  
Ellen Thomas  
Town of Earl  
TrySports  
Susan Tuttle  
Kristine Vaden  
Walmart Distribution Center 6070  
Amanda Walrath  
Linda K. Wamer  
J.B. Watson, Jr.  
Bob Webb  
Wells Fargo  
Solange Werner  
Dorothea West  
Leslie Westmoreland  
Wickcraft Company  
Withers & Ravenel Inc.  
Susan zumBrunnen





4530 Park Road, Suite 420  
Charlotte, N.C. 28209

[carolinathreadtrail.org](http://carolinathreadtrail.org)



Stay connected

NON-PROFIT  
U.S. Postage  
PAID  
Charlotte, NC  
Permit No. 1967C

*Change Service  
Requested*

Catawba Lands Conservancy is working in partnership with Foundation For The Carolinas and many regional and local partners on the Carolina Thread Trail initiative.

## A PARTY FOR TRAILS

National Trails Day Celebration

**SATURDAY, JUNE 3**

10 a.m.–2 p.m.

South Fork Trail and Blueway  
McAdenville, N.C.

**FREE**

Guided nature hikes and paddle  
Free kayak rentals  
Live music  
Geocaching  
Mayobird, Blue Blaze Brewery  
& King of Pops  
AND MORE!



THANKS TO OUR SPONSORS



Our National Trails Day celebration in 2016 welcomed more than 800 trail lovers to the South Fork Trail.  
Photos by Nancy Pierce.