

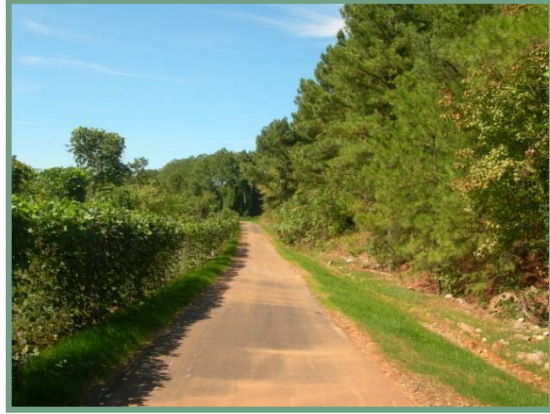
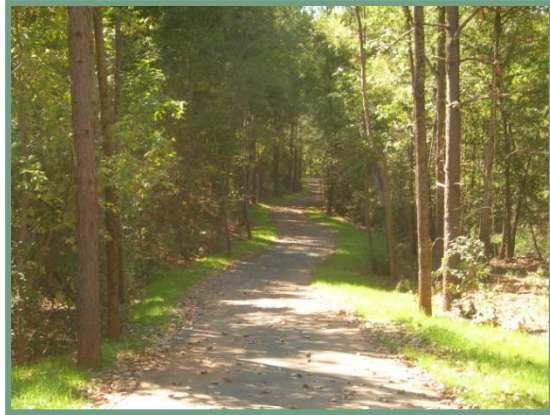
KINGS MOUNTAIN GATEWAY TRAIL KINGS MOUNTAIN, NC

The Kings Mountain Gateway Trail, as part of the Carolina Thread Trail, is planned to connect the City of Kings Mountain to Crowders Mountain State Park, Kings Mountain State Park and Kings Mountain National Military Park. The first phase of the trail open to the public is 2.26 miles and consists of paved trail and soft-packed gravel trail. The trail head consists of a restroom/office facility, parking for over 30 vehicles, a bike rack and kiosk, plus a picnic shelter that includes nine picnic tables and two large grills.

The trail will preserve the natural beauty of Kings Mountain and provide a place for nature exploration, education in science and history, and a venue for community events and family celebrations.

The trail is ADA compliant.





KINGS MOUNTAIN GATEWAY TRAIL KINGS MOUNTAIN, NC

Directions and Parking

Parking is available at the trail head, located at 807 S. Battleground Avenue, at the corner of Quarry Road.

Directions from I-85 S: From I-85 S, merge onto US 74 W via Exit 10B toward Kings Mountain/Shelby. Take the US 74-BR exit toward Kings Mountain. Turn slight right onto E. Kings Street. Travel 1.1 miles. Turn left onto S. Battleground Avenue. Travel 1.0 miles and parking will be on the left.

Directions from US 74 E: From US 74 E, take the US 74-BR exit toward Moss Lake. Turn right onto Shelby Road/US 74-BR E. Travel 1.7 miles and turn right onto Kings Mountain Boulevard. Travel 2.0 miles and turn left onto S. Battleground Avenue. Travel 1.9 miles and parking will be on the right.



KINGS MOUNTAIN GATEWAY TRAIL

KINGS MOUNTAIN, NC

Trail Length

2.26 Miles Total

Points of Interest

The trail offers tranquil views skirting the rim of an inactive quarry, following old mining roads.

Surface Type

Part asphalt, part packed gravel

Permissible Activities

Walking
Running
Biking
Roller skating
Skateboarding

Level of Difficulty

Easy walk, level
ADA compliant

Pet Policy

Pets on 6 ft. leash
Owner responsible for pet waste cleanup; no pet waste stations

Restroom facilities availability

Restrooms are available at the trail head

Fees and hours

No fees
Hours: Dawn to dusk year round; gates stay locked after hours

Website

www.kmgatewaytrails.org

